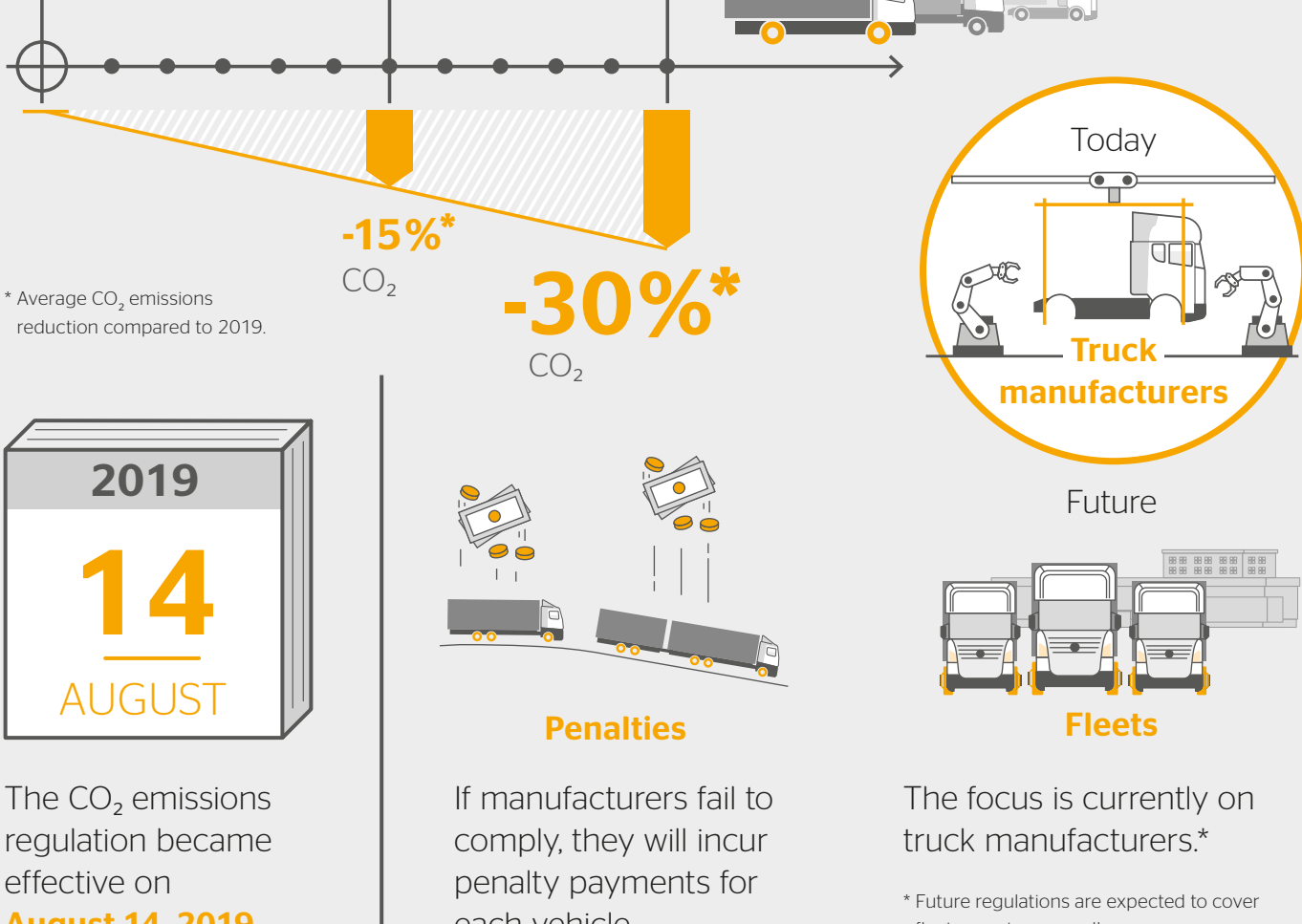


VECTO & THE NEW HEAVY-DUTY VEHICLES CO₂ EMISSIONS REGULATION

What is new?

The EU has introduced new regulations for truck manufacturers.

These will mean cutting average CO₂ emissions from new heavy-duty vehicles by 15% by 2025 and by 30% by 2030.



2019
14
AUGUST

The CO₂ emissions regulation became effective on **August 14, 2019.**

Penalties

If manufacturers fail to comply, they will incur penalty payments for each vehicle.

Which vehicles are affected?

January 2019*

Large trucks (rigid and tractor) with a 4x2 and 6x2 axle configuration and a GVW > 16t.

July 2020**

Vehicles (rigid and tractor) with a 6x4 and 8x4 axle configuration (all weights).

January 2020**

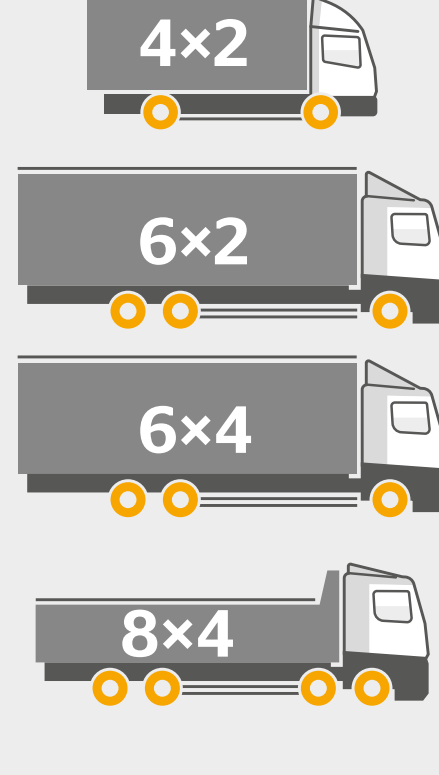
Vehicles (rigid and tractor) with a GVW > 7.5t.

Extended regulations will affect further vehicle configurations and trailers in the future.

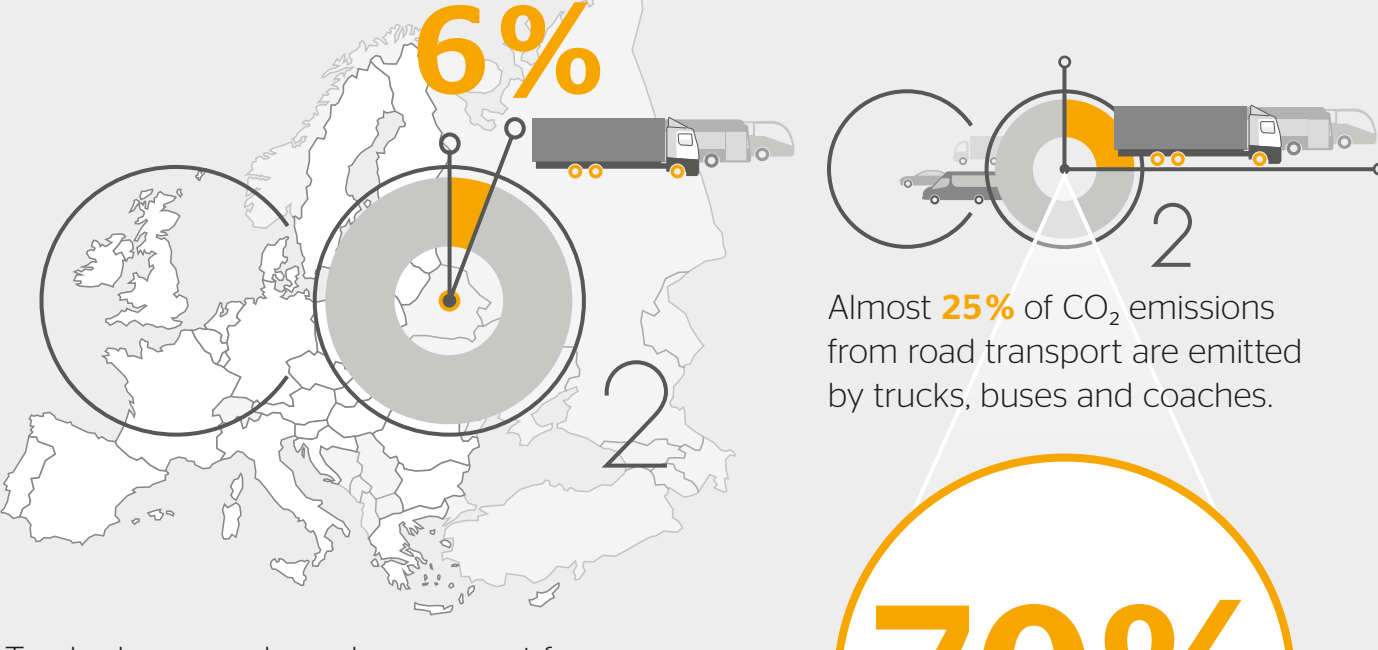
* HDV CO₂ regulation (EU 2019/1242) & VECTO regulation (EU 2017/2400)

** VECTO regulation (EU 2017/2400)

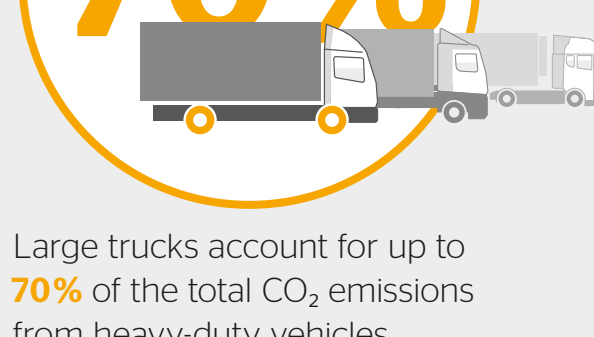
Vehicle groups 1, 2, 3, 4, 5, 9, 10, 11, 12 and 16.



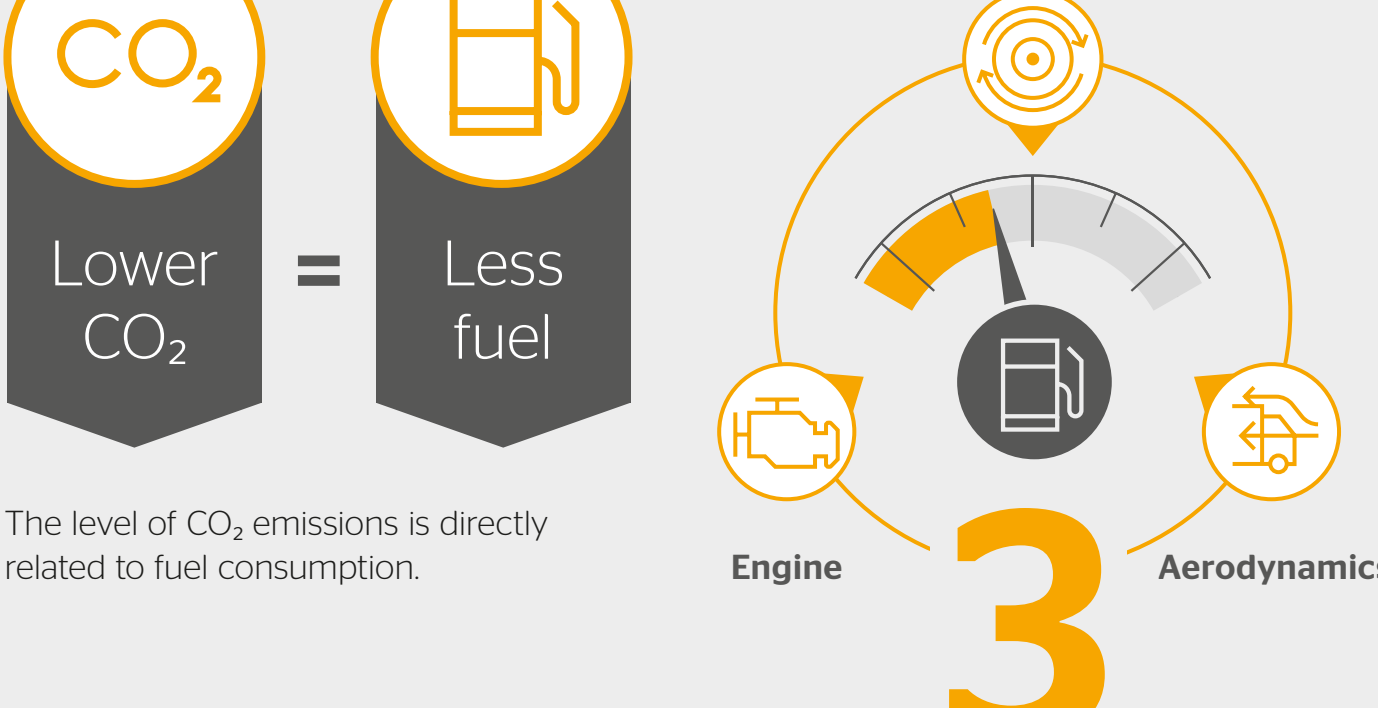
Why is this so important?



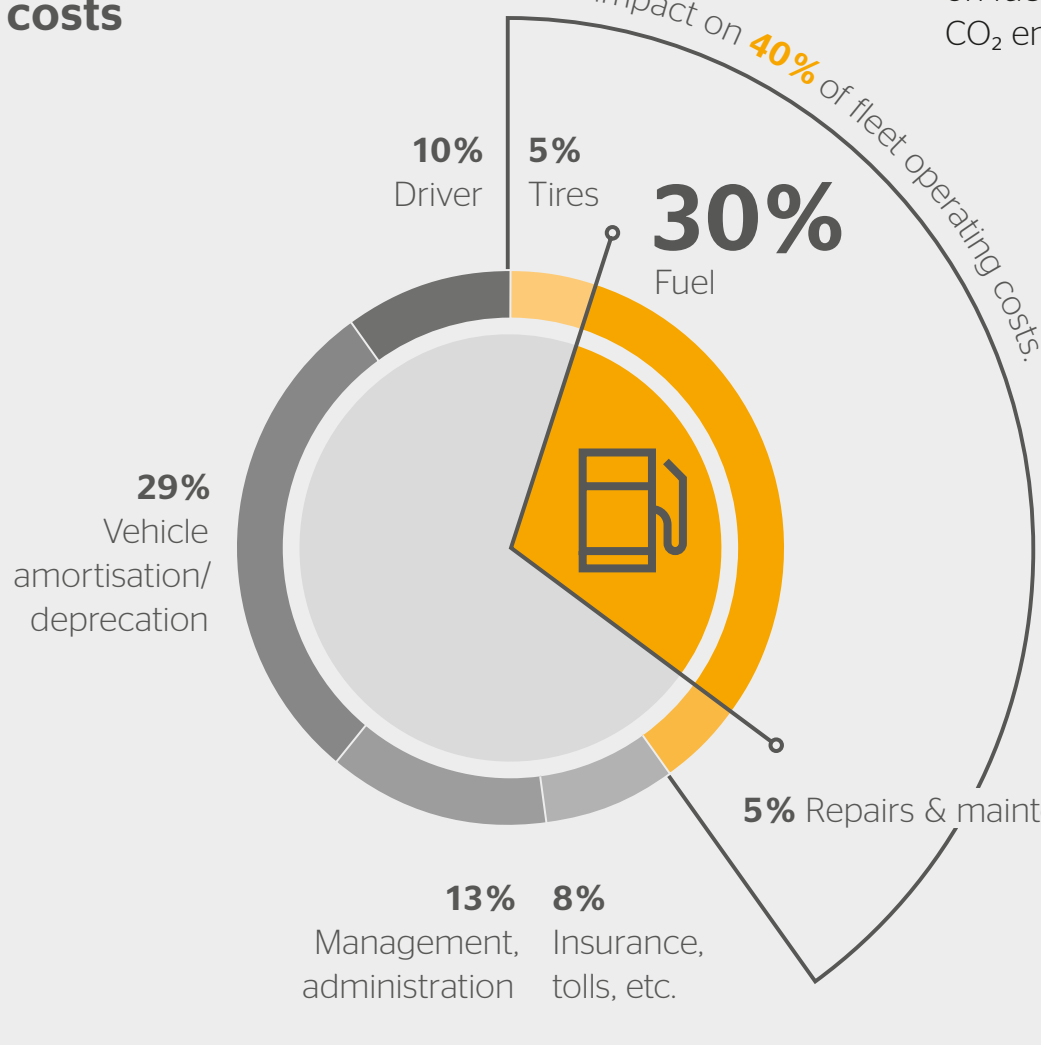
CO₂ emissions will keep rising dramatically as volumes of road freight continue to increase.



CO₂ emissions & fuel consumption



Fleet operating costs



What is VECTO?

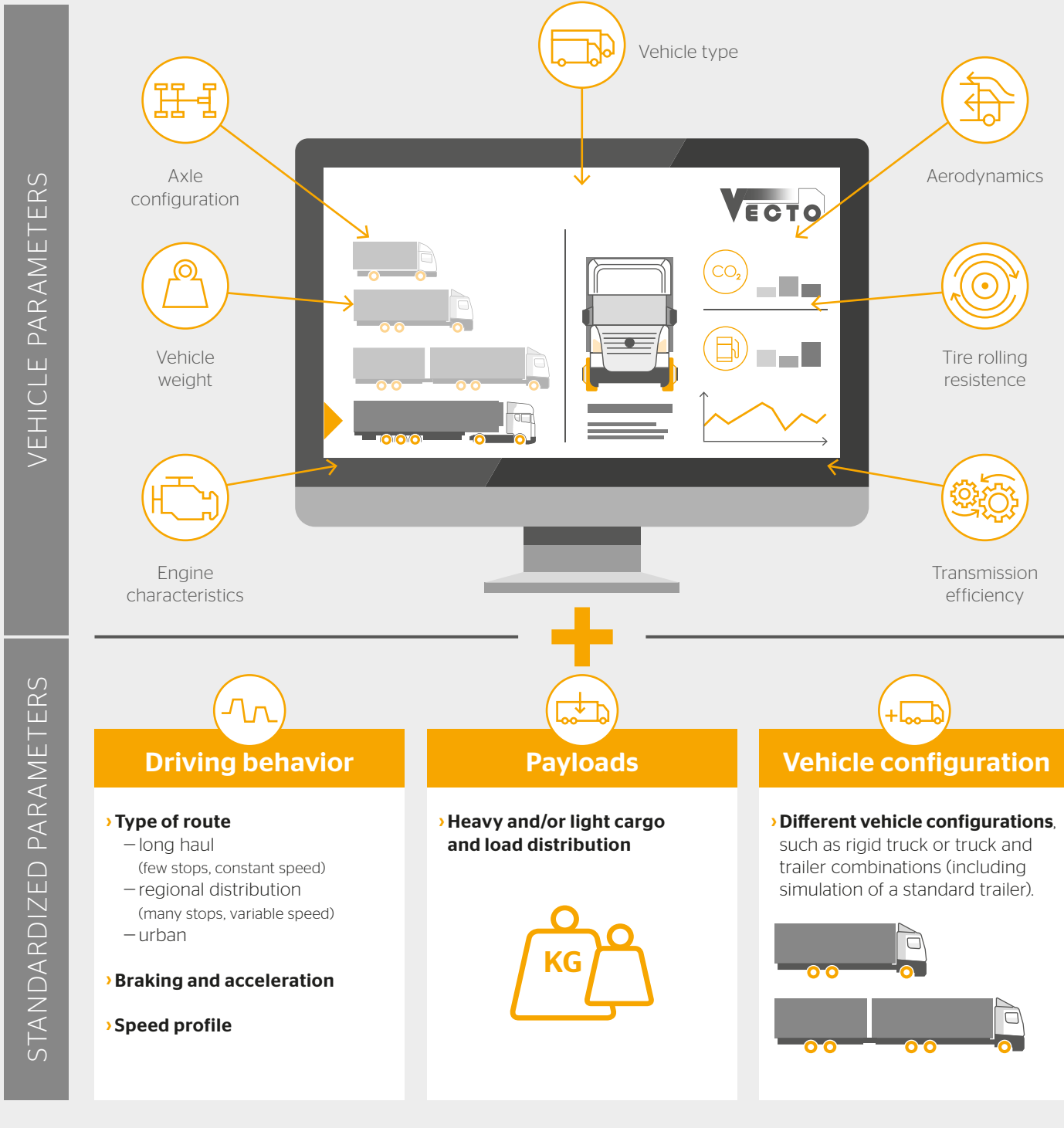


Vehicle Energy Consumption Calculation Tool

VECTO is a mandatory, digital simulation tool that has been developed by the EU to ensure that the CO₂ emissions reduction targets are met.

With VECTO, vehicle manufacturers can simulate the CO₂ emissions and fuel consumption of individual vehicle configurations.

As inputs, the tool uses a number of parameters:



Fleet operators will benefit from:

- ✓ Easy comparison of different vehicles
- ✓ Greater transparency on fuel consumption and CO₂ emissions of different vehicle configurations when purchasing new trucks
- ✓ Positive impact on the fuel efficiency of the entire fleet

THE RIGHT TIRE FOR YOUR BUSINESS? WE HELP YOU CHOOSE.