

Conti Hybrid HT3 19.5" Regional Trailer

Applications: Long haul/Regional over the highway trailer use.

Legend:

3G Casing	SmartWay® Verified	Intelligent Tire	Retread Available

PRODUCT FEATURES ABOVE ONLY APPLY TO PRODUCTS IF THE MATCHING ICON IS DARKENED.

Conti Hybrid HT3

19.5" Regional Trailer

GOODS PEOPLE CONSTRUCTION



PRODUCT DATA

TIRE SIZE	LOAD RANGE	ARTICLE NUMBER	TREAD DEPTH (32nds)	MAX SPEED (MPH)	STATIC LOADED RADIUS		OVERALL INFLATED DIAMETER		OVERALL INFLATED WIDTH		LOADED SECTION WIDTH		APPROVED RIM(S)	MINIMUM DUAL SPACING		REVS PER UNIT		TIRE WEIGHT		MAX. LOAD @ INFLATION	
					IN	MM	IN	MM	IN	MM	IN	MM		IN	MM	MI	KM	LB	KG	LBS, PSI (KG, KPa)	LBS, PSI (KG, KPa)
265/70R19.5	H	05322000000	17	68	15.8	401	34.7	881	10.3	262	10.7	272	7.50, 6.75, 8.25	11.6	295	609	378	80	36	6005, 125 (2725, 860)	5675, 125 (2575, 860)
285/70R19.5	J	05321680000	18	68	16.2	412	35.9	911	11.1	283	11.6	294	8.25, 7.50, 9.00	12.5	318	590	366	93	42	7390, 130 (3350, 900)	6940, 130 (3150, 900)

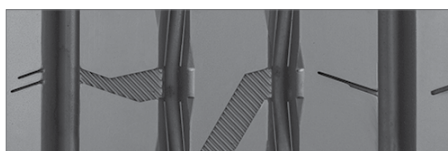
TUBELESS TIRES ON 15 DEGREE DROP CENTER RIMS

Note - Rim listed first is the measuring rim. Minimum Dual Spacing calculated without chains. # - Exceeding the lawful speed limit is neither recommended nor endorsed. Overall widths will change 0.1 inch (2.5 mm) for each 1/4 inch change in rim width. Minimum dual spacing should be adjusted accordingly. Continental Tire the Americas, LLC reserves the right to change product specifications at any time without notice or obligations. Please consult rim manufacturers load and inflation limits. Never exceed rim manufacturers limits without permission of component manufacturer.

Features & Benefits



Advanced application-optimized compound adds up to significant improvements in rolling resistance and mileage.



Narrowed groove widths result in increased pattern volume which improves wear resistance to provide high mileage performance.



Low rolling resistance sidewall compound used to reduce heat through friction elimination.

Also available in **22.5" & 24.5" Tire**

Applications: Long haul/Regional over the highway trailer use.