



TRUST BUILT BY THE MILE.

GENERAL HT+

LONG HAUL, FUEL EFFICIENT TRAILER TIRE



- › LONG DISTANCE HAULS
- › MANY MILES TO REMOVAL
- › FUEL-EFFICIENT
- › COMFORTABLE RIDE



GENERAL TIRE

GENERAL TIRE. SINCE 1915

GENERALTIRETRUCK.COM



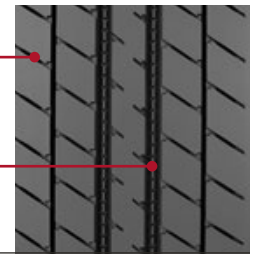
SMARTWAY VERIFIED

LONG HAUL, FUEL EFFICIENT TRAILER TIRE

GENERAL HT+

20% MILEAGE IMPROVEMENT*
DUE TO ADVANCED COMPOUND

ULTRA LOW ROLLING RESISTANCE
PROVIDES MAXIMUM FUEL EFFICIENCY



FEATURES & BENEFITS

Advanced tread compound delivers **20% MILEAGE IMPROVEMENT.***

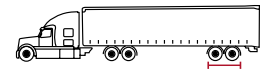
ULTRA LOW ROLLING RESISTANCE, Smartway and GHG 2 (Greenhouse Gas Phase II) compliant.

Improved compounds with superior tear resistance for **15% MORE CUT/CHIP/CHUNK RESISTANCE.***

Self-cleaning tread design and groove geometry **PREVENTS STONE TRAPPING** for extended casing life.

Superior bead and belt package for casing durability and **MAXIMUM RETREADABILITY.**

**IMPROVEMENT VERSUS PREDECESSOR GENERAL HT.*



TECHNICAL DATA

| TIRE SIZE | LOAD RANGE | ARTICLE NUMBER | TREAD DEPTH (32NDS) | MAX. SPEED (MPH) | STATIC LOADED RADIUS | | OVERALL INFLATED DIAMETER | | OVERALL INFLATED WIDTH | | LOADED SECTION WIDTH | APPROVED RIM(S) | MIN. DUAL SPACING | | REVS PER UNIT | | TIRE WEIGHT | | MAX. LOAD @ INFLATION | | |
|-------------|------------|------------------------------|---------------------|------------------|----------------------|-----|---------------------------|------|------------------------|-----|----------------------|-----------------|-------------------|------|---------------|-----|-------------|-----|-----------------------|-------------------------|---------------------------|
| | | | | | IN | MM | IN | MM | IN | MM | | | IN | MM | IN | MM | MI | KM | LBS | KG | SINGLE LBS, PSI (KG, KPA) |
| 11R22.5 | G | 05310670000 *05653700000* | 13 | 75 | 19.3 | 490 | 41.1 | 1044 | 11.1 | 282 | 12.2 | 310 | 8.25, 7.50 | 12.5 | 318 | 504 | 313 | 106 | 48 | 6175 / 105 (2800 / 720) | 5840 / 105 (2650 / 720) |
| 295/75R22.5 | G | 05310690000 *05653720000* | 13 | 75 | 18.5 | 470 | 39.8 | 1011 | 10.9 | 277 | 12.0 | 305 | 8.25, 7.50 | 12.5 | 318 | 520 | 323 | 100 | 45 | 6175 / 110 (2800 / 760) | 5675 / 110 (2800 / 760) |
| 11R24.5 | G | 05310700000 *05653730000* | 13 | 75 | 20.2 | 513 | 43.0 | 1092 | 11.1 | 282 | 12.2 | 310 | 8.25, 7.50 | 12.5 | 318 | 481 | 299 | 114 | 52 | 6610 / 105 (3000 / 720) | 6005 / 105 (2725 / 720) |
| 285/75R24.5 | G | 05310710000 *05653740000* | 13 | 75 | 19.1 | 485 | 41.1 | 1044 | 10.9 | 277 | 12.0 | 305 | 8.25 | 12.5 | 318 | 504 | 313 | 104 | 47 | 6175 / 110 (2800 / 760) | 5675 / 110 (2575 / 760) |
| 255/70R22.5 | H | 05310680000 *05653710000* | 18 | 75 | 16.5 | 420 | 36.6 | 930 | 9.9 | 251 | 10.3 | 262 | 6.75, 7.50, 8.25 | 11.3 | 287 | 566 | 351 | 90 | 41 | 5510 / 120 (2500 / 830) | 5070 / 120 (2300 / 830) |

TUBELESS TIRES ON 15 DEGREE DROP CENTER RIMS

Note - Rim listed first is the measuring rim. ** = Intelligent Tire Article #. Minimum Dual Spacing calculated without chains. # - Exceeding the lawful speed limit is neither recommended nor endorsed. Overall widths will change 0.1 inch (2.5 mm) for each 1/4 inch change in rim width. Minimum dual spacing should be adjusted accordingly. Continental Tire the Americas, LLC. reserves the right to change product specifications at any time without notice or obligations. Please consult rim manufacturers load and inflation limits. Never exceed rim manufacturers limits without permission of component manufacturer.

Whether your operation is highway, regional, urban or on/off-road, **you can trust General Tire to deliver commercial truck tires that work as hard as you do.**

GENERALTIRETRUCK.COM