



# **Turn world logistic connection.**

## Continental Airport Solutions



A large commercial airplane is parked on a tarmac during sunset. The cargo hold is open, and a ground service vehicle is visible in the foreground. The scene is illuminated by the warm, golden light of the setting sun, creating a dramatic atmosphere. The text "Prepare for take-off with Continental" is overlaid in white, bold, sans-serif font.

# Prepare for take-off with Continental



Airport operations are facing same challenges as many different types of logistic processes. The goal is to increase operational performance while meeting growing demands for individual solutions, strict safety requirements and digitized services.



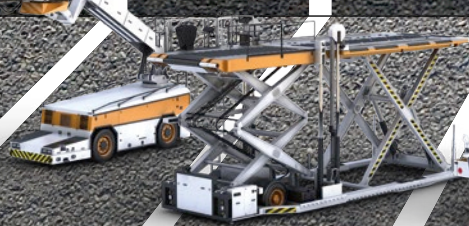



Continental tires are the best solution for anyone concerned about their operating costs and satisfy specific airport requirements with a broad portfolio of specialized products for the airport industry. Having finely balanced performance features, our tires are designed for the variety of functions and vehicles found there.

### **German engineering and expertise**

More than 150 years of enhanced tire knowledge. Our history of precision German engineering is backed by a promise for the future: to continue to produce tires that allow you to make your “Take-off”, whenever you want it.



# Application Overview

› Radial	› ContiRT20 › ContiRV20 › TerminalMaster	› ContiRT20 › ContiRV20 › TerminalMaster	› ContiRT20 › ContiRV20		› ContiRT20 › ContiRV20	› ContiRT › ContiRV › ContiRV AllSeaso
› V.Ply						
› Solid			› SC20 › SC18 › CS20 › SH12	› SC20 › SC18 › CS20 › SH12		› SC20 › SC18 › CS20
› POB			› ContiPT18 › MH20	› ContiPT18 › MH20		
						
PASSENGER STEPS	DE-ICER	LOADER	AIR STARTING UNIT	CARGO TRANSPORTER	TOWBAR AIRCRAFT TRACTOR	

## RADIAL TIRES



ContiRT20



ContiRV20



ContiRV20 AllSeason



TerminalMaster

## V.PLY TIRES









TerminalMaster V.Ply



ContainerMaster+



20 20 20 on	<ul style="list-style-type: none"> <li>› ContiRT20</li> <li>› ContiRV20</li> <li>› ContiRV20 AllSeason</li> </ul>	<ul style="list-style-type: none"> <li>› ContiRT20</li> <li>› ContiRV20</li> <li>› ContiRV20 AllSeason</li> <li>› TerminalMaster</li> </ul>		<ul style="list-style-type: none"> <li>› ContiRT20</li> <li>› ContiRV20</li> </ul>	
				<ul style="list-style-type: none"> <li>› TerminalMaster V.Ply</li> <li>› ContainerMaster+</li> </ul>	
			<ul style="list-style-type: none"> <li>› SC20</li> <li>› SC18</li> <li>› CS20</li> <li>› SH12</li> </ul>		<ul style="list-style-type: none"> <li>› SC20</li> <li>› SC18</li> <li>› CS20</li> <li>› SH12</li> </ul>
			<ul style="list-style-type: none"> <li>› ContiPT18</li> <li>› MH20</li> </ul>		<ul style="list-style-type: none"> <li>› ContiPT18</li> <li>› MH20</li> </ul>
					
WIRELESS LIFT TRUCK	BELT LOADER	BAGGAGE TRACTOR	BAGGAGE TRAILER	CONVENTIONAL AIRCRAFT TRACTOR	SCISSORS LIFT

## SOLID TIRES



SC20+



SC18



CS20+



SH12+



ContiPT18



MH20

## PRESS-ON-BANDS



A large commercial airplane is parked on a tarmac at sunset. The sun is low on the horizon, casting a warm orange glow over the scene. Several ground service vehicles, including a fuel truck, a water truck, and a small car, are positioned around the plane. Ground crew members in orange vests are visible near the aircraft. The background shows a hazy landscape with mountains under a cloudy sky.

# Customer service for a reliable take-off.



## Customer Services

### Reliable support combined with sustainable solutions

Every day we aim to make your mobility safer, smarter and more sustainable. With excellent tires and reliable solutions, we strive to be your perfect service partner for the airport industry.

Our sustainable solutions add value to your company and to society. To put them in practice we put our customers first. Whether it is consultancy about the right tires for your applications, or on-site assistance with tire testing and digital solution implementation, we are there for you.

We believe “tire business is people business.” Together we can shape a sustainable future.





### Technical Customer Services

- Warranty support – from Basic to Advanced
- Monitoring systems for evaluation and prediction of tire performance
- Technical consultancy and trainings

### Sustainability (Targets until 2050)

- 100% carbon neutrality along our entire value chain
- 100% emission-free mobility and industries\*
- Circular economy with 100% closed resource and product cycles
- 100% responsible value chain
- Our ambition: 100% renewed and recycled tires

### Experts at Work

- Highly trained employees in every position – from Sales to R&D
- Close connection to customers to fulfill our conviction "tire business is people business"
- Advanced training tools – online, live and hybrid



## ContiRV20 Velocity

The ContiRV20 Velocity offers high productivity and lowest operating cost in fast moving material handling applications such as airports and logistics. Safety is also in focus with improved wet grip and traction ensuring shorter stopping distances and better grip on slippery or sloping surfaces such as ramps. In addition radial casing together with a closed outside shoulder three-rib design provides excellent durability and lifetime as well as highest degree of ride comfort and handling.



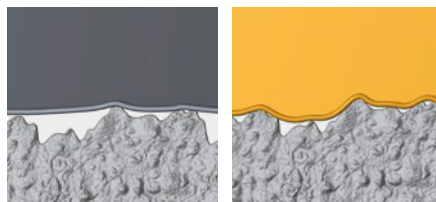
### Features and benefits



#### Radial tire construction for most efficient transmission of drive forces

Improved energy efficiency and reduced CO<sub>2</sub> emission output via low rolling resistance rubber compounds

Low energy consumption



#### Molecular tread compound that grips structure of road surface

Ribbed tread profile for permanent contact with ground surface

Wet grip and traction



#### Ribbed tread pattern for smooth road contact

Radial tire construction gives optimum damping

Closed shoulder to avoid tearing and elimination of heel and tow wear

Ride comfort and even wear





## ContiRV20 AllSeason

The ContiRV20 AllSeason is the ideal tire for small tow tractors and baggage loaders, which operate as part of the ground handling fleet at many airports of the world. No matter if summer or winter conditions, the tire perfectly works on the typical hard and flat airport surfaces and ramps, where it can get slippery when they are wet or are covered in snow or slush (melted wet snow).

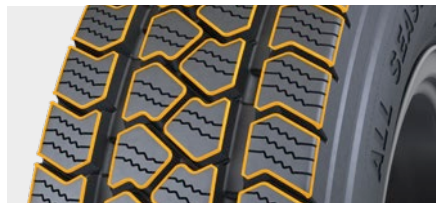


### Features and benefits



#### Angled pocket sipes

Optimum traction performance and steering capabilities in both summer and winter conditions.



#### Interlocked tread blocks

Increased traction and better braking performance in all weather conditions due to tread block orientation.



#### 3 circumferential rib design

High comfort and steering capabilities due to ribs and high amount of tread pattern blocks.





**We are best  
says Southwest.**

---



“

We are extremely grateful for the exceptional partnership we've cultivated with Continental. Their comprehensive product portfolio and unwavering commitment to superior service have consistently exceeded our expectations at Southwest Airlines. We eagerly anticipate our continued collaboration, embracing their innovative technology advancements, particularly the game-changing RV20 All-Season tires. It's truly inspiring to align ourselves with like-minded and forward-thinking companies, as we collectively strive for future growth and success in this dynamic industry.

*Allen Brown*  
*Senior Manager Southwest GSE*

”





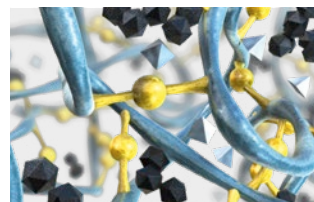
## SC20+<sup>Ⓞ</sup>



## SC18<sup>Ⓞ</sup>



### Features and benefits



#### Excellent traction

Proven tried tread design with large, individual profile blocks and pronounced linear grooves deliver excellent traction

#### High durability

Optimized compound thanks to short-chained sulfur components

Optimized silica portion for the highest level of resistance against cracking

#### Heat tolerant compound

High mileage

Tire wears slowly, smoothly and evenly

#### Robust sidewall

High durability

Improved abrasion behavior

Cut and chunk resistance





**CS20+<sup>+</sup>**



**SH12+<sup>+</sup>**



## Features and benefits



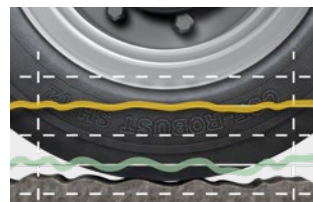
### Highest steering precision

The closed shoulder design allows a fast and direct steering response



### Excellent cornering stability

A wide shoulder rib instead of individual tread blocks ensures continuous contact between tire and ground surface therefore preventing vibration and noise development for a smooth ride and overall driver comfort



### Excellent driving comfort

Low vibrations due to the slick design enable an exceptionally smooth performance



### Very good resistance against damage

The slick design leads to an increased damage resistance and excellent reliability due to less tread edges compared to profiled pattern





## ContiPT18<sup>o</sup>

The ContiPT18 is designed similar to the Continental premium Super Elastic resilient tires. Its special tread pattern provides excellent levels of traction. The multi-layer construction ensures premium driving comfort. The specialist for indoor application is the non marking version of ContiPT18.



### Features and benefits



#### TWI „Tread Wear Indicator“

The new circumferential tread wear indicator enables efficient tire tread depth tracking. It determines the right stage to replace tire when worn down.



#### Excellent traction

Proven tread pattern with large, individual profile blocks and pronounced linear grooves deliver excellent traction.



#### Mileage with low rolling resistance on high level

Maximized performance due to 2-stage construction. Intermediate compound for low heat build up combined with tread compound for high wear properties.





## Continental MH20<sup>C</sup>

The Continental MH20 with its specialized multilayer construction in combination with smooth pattern design provides maximum contact to the ground and has low vibrations. The specialist for indoor application is the non marking version of MH20.



### Features and benefits



#### Excellent driving comfort

Low vibrations thanks to the slick design enable an exceptionally smooth performance



#### Very good resistance against damage

The slick design leads to an increased damage resistance and excellent reliability due to less tread edges compared to profiled pattern



#### Mileage with low rolling resistance on high level

Maximized performance due to 2-stage construction. Intermediate compound for low heat build up combined with tread compound for high wear properties.





sensor  
CONNECT



## ContiRT20

The ContiRT20 tread design features a high number of tread edges to grip the surface beneath the wheel providing high levels of traction on both smooth and more uneven ground surfaces to ensure that there is no loss of operational efficiency.

### Features and benefits



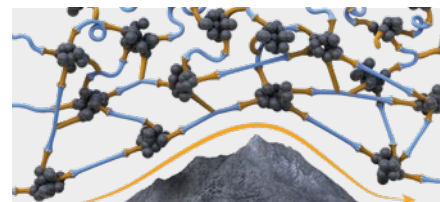
#### Excellent all-round traction on many surfaces and in various climatic conditions

High number of tread edges and multiple tread edges grip ground surface.



#### Good transmission of tractive force with high mileage

Large, robust tread blocks with linked tie bars improve transmission of tractive force and increase mileage by reducing vibration-induced abrasion.



#### Increased durability

Innovative tread compound for resistance to severe wear and tread cracking caused by stress tears of foreign objects.





## TerminalMaster Radial

Airport operations are very demanding for tires. Airport conditions are especially harsh with a high risk of tire damage. It is therefore recommended to use a tire specially developed for this application. The Continental TerminalMaster is designed for this type of heavy-duty application combining a high load carrying capacity, extra deep tread and added damage protection from foreign objects.



### Features and benefits



#### Distinctive S-shaped cross ribs

The distinctive S-shaped cross ribs create numerous grip edges for outstanding traction.



#### Deep tread depth and reinforced sidewall

Deep tread depth gives increased mileage and added puncture resistance. Reinforced sidewalls give additional protection from foreign objects.



#### Closed-shoulder design

Wide shoulder ribs give resistance to tire abrasion during maneuvers and prevent uneven wear.





## TerminalMaster V.ply

TerminalMaster V.ply tires are designed with a closed shoulder, which increases stability precision while travelling in a straight line and cornering. The three-ribbed design keeps tread vibration to a minimum, an advantage for airport vehicles as fewer steering corrections are required. In addition the three interlocked tread ribs serve high traction and avoid slippage when pushing/pulling/transporting heavy loads, being essential when mounted on airport ground support pushbacks. Finally, the innovative Plus Compound offers improved abrasion resistance to increase the lifetime of the tire.



### Features and benefits



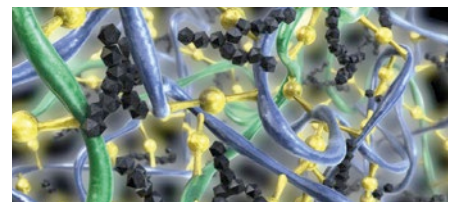
#### Precise track holding

Closed shoulder tread design ensures stability on straight lines and corners



#### Reduced tread vibration and slippage

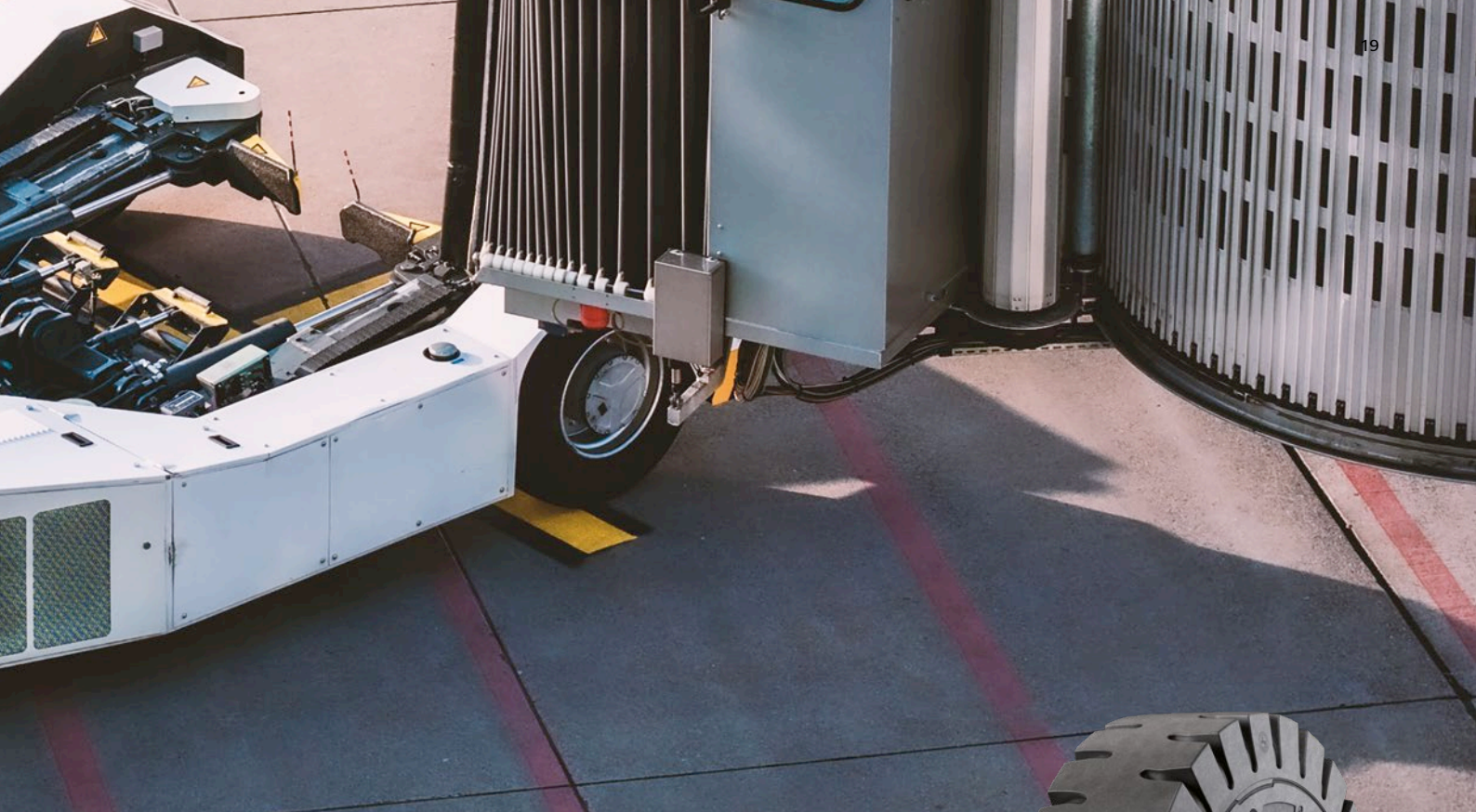
Continuous tread profile which minimizes tread movements



#### Increased lifetime

Resistance to abrasion due to Plus Compound



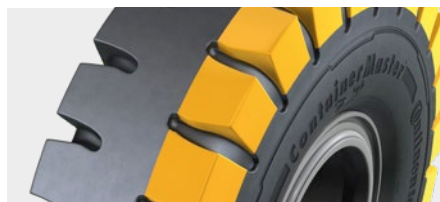


## ContainerMaster+

The Continental Port Plus Compound in combination with the unique V.ply technology makes the Continental ContainerMaster+ a robust all-rounder. Its massive sidewalls mean less tilting, improved protection against damage, and a longer service life. Due to the advanced V.ply design and the ultra-robust Port Plus Compound tread it handles steering in a stationary position much better, reducing tread cracks to a minimum.



### Features and benefits



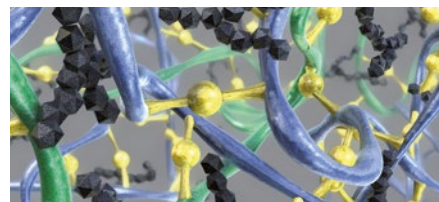
#### Massive tread blocks

The massive tread blocks provide highest stability even under extreme conditions



#### V.ply for maximum stability

Multiple V.ply layers provide additional rigidity to the tread area and allow the design of utterly strong sidewalls



#### Continental Port Plus Compound for maximum robustness

The new Continental Port Plus Compound ensures excellent resistance against wear especially on high abrasive grounds and steering in stationary position



# Digital Tire Monitoring

## Your challenges in airport applications



**Lack of time** for frequent manual tire checks due to 24/7 shifts.



Manoeuvring in small areas and high turn rate put high stress on tires and **can lead to high temperature in tires.**



A wide variety of different processes and applications both **indoor and outdoor.**



**Punctures** due to ground debris and other foreign object damage.



## Solution

- Receive real-time status by e-mail and SMS alerts or check your tire pressure in the web portal before vehicles go into operation to **reduce risk of breakdowns.**
- Properly inflated tires **save you 1 % on fuel** compared to a tire just ten percent underinflated. Additionally, it increases casing life by up to 20 %.\*
- Monitor tire information of entire fleet in web portal.
- Get precise information on the tires' temperature to **help prevent tire damages and breakdowns.**
- Ensure **correct inflation pressure** during vehicle operations. Get system-supported tire information to increase safety and **save working hours** by eliminating manual pressure checks.

\* Please refer to the tire manufacturer's load and inflation information to determine the tire's weight capacity and proper air pressure.



# Digital Tire Monitoring Solutions



up to  
**1%**  
increase of  
fuel efficiency<sup>1</sup>



**15 mins**

saving for vehicle  
inspection  
(195 hours/year)<sup>2</sup>



up to  
**15%**  
longer  
tread life<sup>1</sup>

<sup>1</sup> vs. a tire that is 10% underinflated

<sup>2</sup> Analysis by Continental based on customer experiences

## Choices of digital solutions



### Tire Sensors Bluetooth ready

Mounted onto the inner liner: measure pressure and temperature from inside the tire.

#### ContiPressureCheck

is the perfect single vehicle solution for monitoring tire pressure and temperature by using one of the following options:

**Hand-Held tool, Dashboard display or into on-board (telematics) system.**

#### ContiConnect Yard

is the solution for multiple vehicles, which regularly return to dedicated checkpoints. The **Yard Reader Station** collects the data of your vehicles wirelessly and transmits it to the ContiConnect web portal.

**Station** collects the data of your vehicles wirelessly and transmits it to the ContiConnect web portal.

#### ContiConnect Live

is the optimal solution for remotely monitoring the tire pressure and temperature of multiple vehicles. Cabin and Trailer Units are available independent or combined with CPC. The system provides real time information, e.g. GPS data. The data is automatically uploaded to the ContiConnect web portal and mobile app, if used.





## Tubeless Sealing Ring (TSR)

### Improved Safety and Mobility

The Tubeless Sealing Ring (TSR) is a product which enables the mounting of Continental industrial radial tires on standard industrial vehicle rims, which, because of their construction, must normally be mounted with a tube and a flap. The TSR consists of a rubber ring with an integrated tire inflation valve.

The rubber ring sits on the cylindrical part of the rim between the beads of the tire, and ensures an airtight interface sealing the tire chamber without the use of a tube and flap.

The TSR works as an enabler for the usage of ContiPressureCheck in combination with a multi piece rim (tube type). ContiPressureCheck uses a sensor inside the tire to continuously monitor the inflation pressure and tire temperature to prevent tire failures and damages and maximize fuel efficiency.



# Tubeless Sealing Ring

## Principle

A rubber sealing ring is mounted inside the tire between its beads.



Off-centered valve position (OC) for rims with short valve slot.



Standard centered valve position for rims with long valve slot.





**Continental Reifen Deutschland GmbH**

Commercial Specialty Tires

Continental-Plaza 1, 30175 Hannover, Germany

Phone: +49 511 938 - 01

[www.continental-specialty-tires.com](http://www.continental-specialty-tires.com)