

Conti Hybrid

Driving regional transport into the future.



GENERATION 3. DRIVEN BY YOUR NEEDS.

Conti Hybrid HS3 / HD3 / HT3 (19.5")

The ever-increasing demands of today’s transport market require a new level of versatility for commercial vehicles. The new Conti Hybrid is the perfect tire solution. With the highest mileage performance and excellent fuel efficiency, it is equally at home on city streets, motorways and uneven roads. Through its new technical features that help you achieve your lowest overall driving costs, the comprehensive, cutting-edge tire line Conti Hybrid is redefining regional, mile after mile after mile.

The new Conti Hybrid is ideal for mixed applications in regional distribution up to 16 t, e.g.

Rigid Truck

Truck-/Drawbar-Trailer

Plateau trailer

Car transporter

Breakdown truck

Vario carrier

and many more ...

ContiLifeCycle inbuilt

Continental’s premium casing, with Air-Keep inner liner, triangular belt and bead with steel cord chafer, guarantees high retreadability. The new regrooving indicators make regrooving faster and easier. The Hybrid tire line is perfectly tailored to our ContiLifeCycle.

GENERATION 3.  
DRIVEN BY YOUR NEEDS.

Technical data and air pressure recommendations

Tire size	Operating code					EU tire label				Rim		Tire dimensions						Load capacity (kg) per axle at tire pressure <sup>6)</sup> (bar) (psi)				
	Pattern	LI/SI <sup>1)</sup>	PR	M+S	Speed Index and reference speed (km / h)	T/T <sup>2)</sup> TL <sup>2)</sup>	C <sup>3)</sup>	B <sup>4)</sup>	69 <sup>5)</sup>	Rim-width	Min. distance between rim centers	Max. standard value in service		Actual value		Stat. radius	Rolling circumference	Tire fit-ment				
												Width	Outer-Ø	Width + 1 %	Outer-Ø ± 1 %	± 1.5 %	± 2 %		7.5 (109)	8.0 (116)	8.5 (123)	9.0 (131)
245/70 R 19.5	Conti Hybrid HS3	136/134 M		M+S	M 130	TL	C	B	69	6.75	270	250	853	240	839	384	2560	141 S	4655	4905	5150	
	Conti Hybrid HD3	136/134 M		M+S	M 130	TL	D	C	74	7.50	279	258		248				136 D	4050	4265	4480	
	Conti Hybrid HT3	141/140 K			K 110	TL	C	B	73									140 D	9045	9525	10000	
265/70 R 19.5	Conti Hybrid HS3	140/138 M	16	M+S	M 130	TL	C	B	69	6.75	286	264	881	254	867	396	2645	143 S	4930	5190	5450	
	Conti Hybrid HD3	140/138 M	16	M+S	M 130	TL	D	C	74	7.50	295	272		262				140 D	4745	5000	5265	
	Conti Hybrid HT3	143/141 K	18		K 110	TL	C	B	73	8.25	318	294						138 D	9315	9810	10300	
285/70 R 19.5	Conti Hybrid HS3	146/144 M	16	M+S	M 130	TL	C	B	69	7.50	311	286	911	275	895	413	2730	150 S	5790	6095	6400	6700
	Conti Hybrid HD3	146/144 M	16	M+S	M 130	TL	C	C	74	8.25	327	294		283				146 D	5425	5715	6000	
	Conti Hybrid HT3	150/148 K	16		K 110	TL	C	B	73	9.00	343	302		291				148 D	10885	11465	12035	12600
305/70 R 19.5	Conti Hybrid HS3	148/145 M	18	M+S	M 130	TL	C	B	69	8.25	334	309	941	297	923	424	2815	148 S	5695	6000	6300	
	Conti Hybrid HD3	148/145 M	18	M+S	M 130	TL	C	C	76	9.00	343	317		305				145 D	10490	11050	11600	

Data acc. to DIN 7805/4, WdK-Guidelines 134/2, 142/2, 143/14, 143/25  
1) Load index single/dual wheel fitment and speed symbol  
2) TT = Tube Type, TL = Tubeless  
3) Fuel efficiency  
4) Wet grip  
5) External rolling noise (db)  
6) For tire pressures of 8.0 bar (116 psi) or greater, use valve slit cover plate



6A82E.en 2015.03

Continental Reifen Deutschland GmbH  
Büttnerstraße 25  
30165 Hannover  
Germany

www.continental-truck-tires.com  
www.continental-corporation.com



Redefining regional:  
Conti Hybrid 19.5

Excellent  
mileage  
fuel consumption

Conti Hybrid HS3 / HD3 / HT3

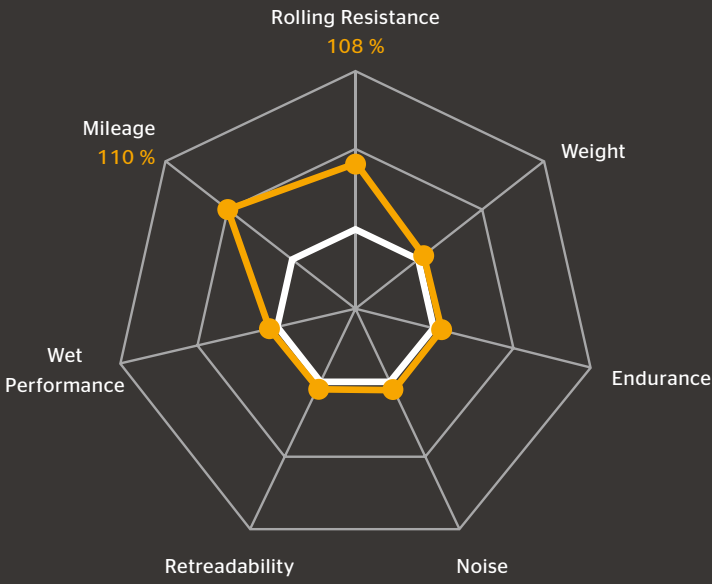
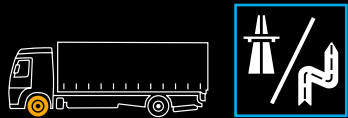
- › Excellent mileage performance and fuel efficiency
- › Ideal for mixed applications: regional traffic, motorways and urban roads



Conti Hybrid HS3      Conti Hybrid HD3      Conti Hybrid HT3

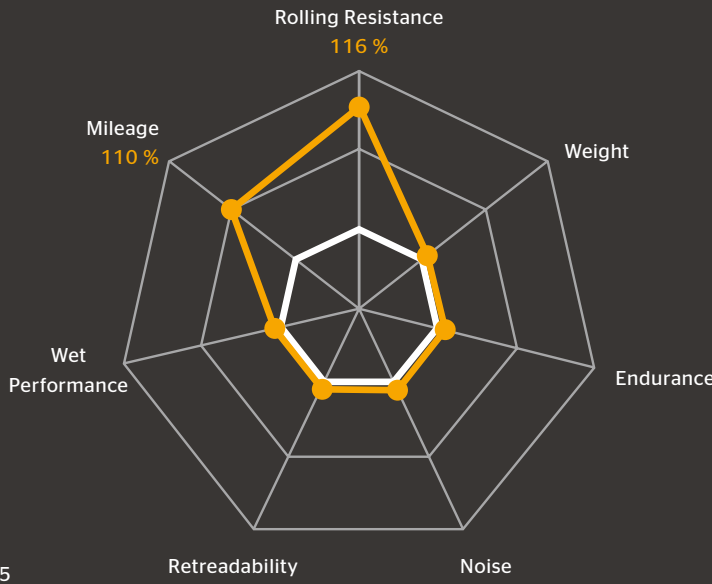
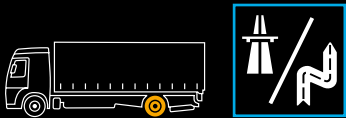


Conti Hybrid HS3



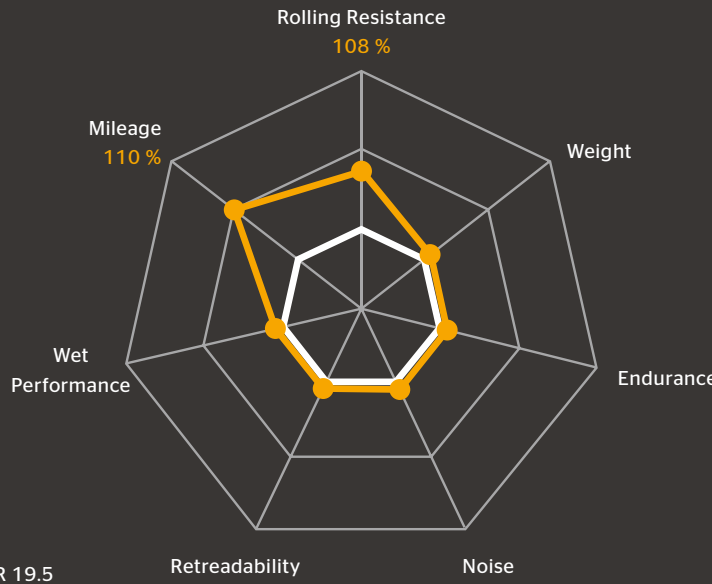
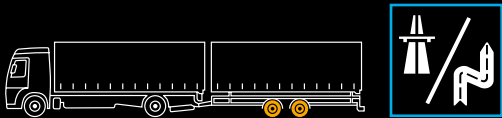
Conti Hybrid HS3    Compared to predecessor 265/70 R 19.5

Conti Hybrid HD3



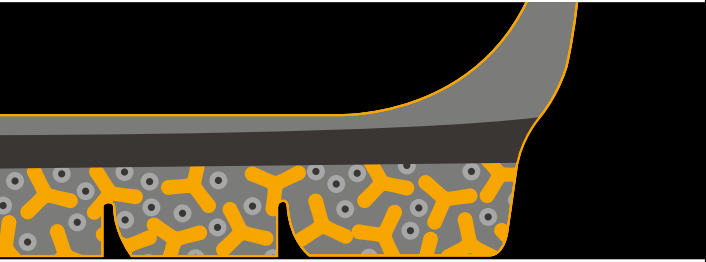
Conti Hybrid HD3    Compared to predecessor 265/70 R 19.5

Conti Hybrid HT3



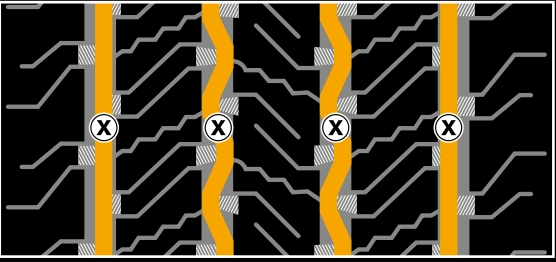
Conti Hybrid HT3    Compared to predecessor 265/70 R 19.5

Product highlights



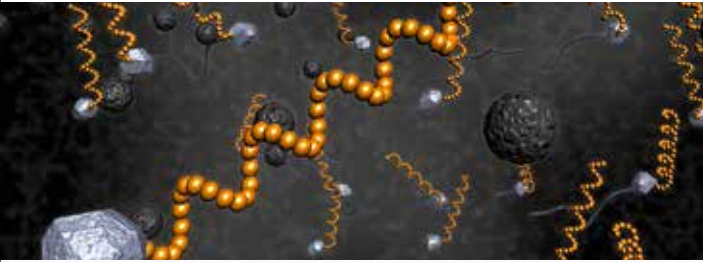
- › **The two-layer tread construction:** combines high mileage performance in the cap compound with significant rolling resistance improvements in the base compound
- › **Plus Volume Pattern:** narrowed groove widths result in increased pattern volume which improves wear resistance to guarantee high mileage performance
- › **Wet performance pocket sipes:** a new siping technology with full-depth sipes enhances water displacement and improves wet performance over lifetime

Regrooving recommendations



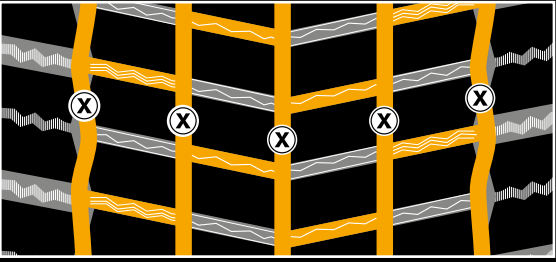
Size	Depth (mm)	Width (mm)
245/70 R 19.5	3.0	8
265/70 R 19.5	3.0	8
285/70 R 19.5	3.0	8
305/70 R 19.5	3.0	8

Product highlights



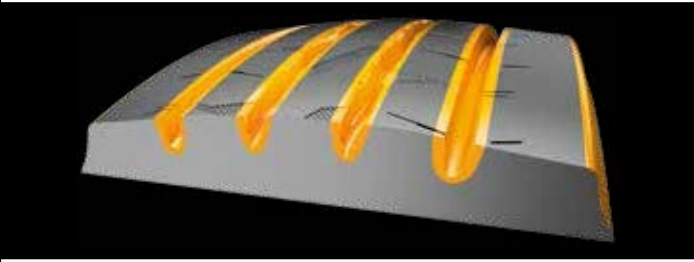
- › **Hybrid Compound:** the advanced application-optimized tread compound adds up to significant improvements in rolling resistance and mileage
- › **Two-layer tread construction:** combines high mileage performance in the cap compound with significant rolling resistance improvements in the base compound
- › **Chamfered Edge:** the Chamfered Edge reduces deformation amplitude in sidewall and bead area which results in improved rolling resistance and helps lower fuel consumption

Regrooving recommendations



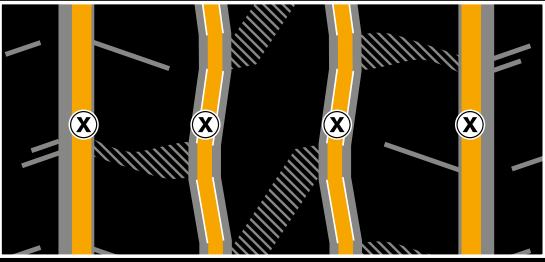
Size	Depth (mm)	Width (mm)
245/70 R 19.5	3.0	5
265/70 R 19.5	3.0	5
285/70 R 19.5	3.0	5
305/70 R 19.5	3.0	5

Product highlights



- › **Plus Volume Pattern:** narrowed groove widths result in increased pattern volume which improves wear resistance to guarantee high mileage performance
- › **Hybrid Compound:** the advanced application-optimized tread compound adds up to significant improvements in rolling resistance and mileage
- › **Rolling resistance sidewall compound:** the polymers selected for the new rolling resistance compound provide more flexibility between the polymer chains. This results in reduced friction and therefore lower rolling resistance

Regrooving recommendations



Size	Depth (mm)	Width (mm)
245/70 R 19.5	3.0	A: 9 B: 7
265/70 R 19.5	3.0	A: 9 B: 7
285/70 R 19.5	3.0	A: 9 B: 7

1) Three Peak Mountain Snow Flake  
"Snow tire" means a tire [...] designed to achieve in snow conditions a performance better than a normal tire [...].  
Source: Economic Commission for Europe of the United Nations (UN/ECE), R117