



ContiConnect Telematics Link

Installation Manual

English - Original instructions

Link Your Tire Data

For Comprehensive Fleet Solutions.

Seamlessly link your sensors' data to telematics systems and unlock real-time tire insights for smarter fleet management.

Contents

1. Introduction	5	4. Installation	12
1.1. About this manual	5	4.1. Delivery scope	12
1.2. Language	5	4.2. Installation sequence overview	13
1.3. Intended audience	5	4.3. Determine permanent installation location	13
1.4. Symbols used in this manual	5	4.4. Mount the Telematics Link	14
1.5. Safety symbols	5	4.5. Connect to vehicle power supply	15
1.6. Other symbols	6	4.6. Configure the Telematics link in the app	16
1.7. Terminology	7		
1.8. Contact information	7		
2. About the Telematics Link	8	5. Verification	16
2.1. Design and function	8		
2.2. Main parts	8	6. Troubleshooting	17
2.3. Type plate	9		
3. Safety	10	7. Maintenance	17
3.1. Intended use	10		
3.2. Reasonably foreseeable misuse	10	8. Transport and storage	18
3.3. Qualification of personnel	10		
3.4. Personal protective equipment (PPE)	11	9. Disposal	18
3.5. Safety instructions	11		
		10. Specifications	19
		11. Conformity	19

Preface

Copyright

All rights reserved. Reproduction and distribution of (parts of) this manual without written permission of Continental Reifen Deutschland GmbH is prohibited.

Disclaimer of liability

The manufacturer cannot be held responsible for personal injury, damage to the Telematics Link, or property damage caused by incorrect use, foreseeable misuse, or failure to follow the instructions in this manual. This also applies to unauthorized modifications of the Telematics Link and the use of non-approved spare parts, tools, or accessories.

Warranty

The respective relevant Continental Reifen Deutschland GmbH terms and conditions apply with the exception of possible different contractual agreements.



The terms and conditions that apply to the sensor can be found at www.continental-industry.com/en/special-pages/conditions

1. Introduction

1.1. About this manual

This manual contains instructions and important information about the installation, operation, and maintenance of the ContiConnect Telematics Link. In this manual, the Telematics Link will also be referred to as “the product”.

Ensure that you read and understand this manual completely before you install, operate, or maintain the product. Keep this manual safe and accessible for future reference and pass it on to the next owner of the product.

1.2. Language

The original manual is written in UK English. All other language versions are translations of the original manual.

1.3. Intended audience




This manual is for qualified technicians who install and maintain vehicle electronic systems. The technicians should have experience with automotive electrical systems and smart devices.

1.4. Symbols used in this manual

Before reading this manual, familiarize yourself with the symbols that are used to indicate different types of information.

1.5. Safety symbols




This manual contains safety instructions that may result in injury when ignored. Each safety instruction is indicated with a signal word. The signal word corresponds with the level of risk of the described hazardous situation:

Safety symbol	Level of risk	Result if not avoided
	High	Indicates a hazardous situation which, if not avoided, could result in death or serious injury.
	Medium	Indicates a hazardous situation which, if not avoided, could result in minor or moderate injury.
	Low	Is used to address practices not related to physical injury.

Safety instructions given at the start of a section apply to the entire section of the manual.

1.6. Other symbols

This manual contains symbols that indicate useful information that complements the instructional text and illustrations.

Symbol	Meaning
	Emphasizes the instruction without indicating an immediate risk of injury or damage.
	Reference to the technical file or another external document.
	Reference to another chapter or paragraph within this manual.

1.7. Terminology

This manual contains technical terms to describe important processes or objects.

Term	Meaning
HHT	Hand-Held Tool
ContiConnect	An online platform that enables you to remotely monitor tire pressure and temperature in real-time and notifies you in case of urgent alerts.

1.8. Contact information

For questions about the product or this manual, please contact:

Continental Reifen Deutschland GmbH
Continental-Plaza 1
30175 Hannover
Germany

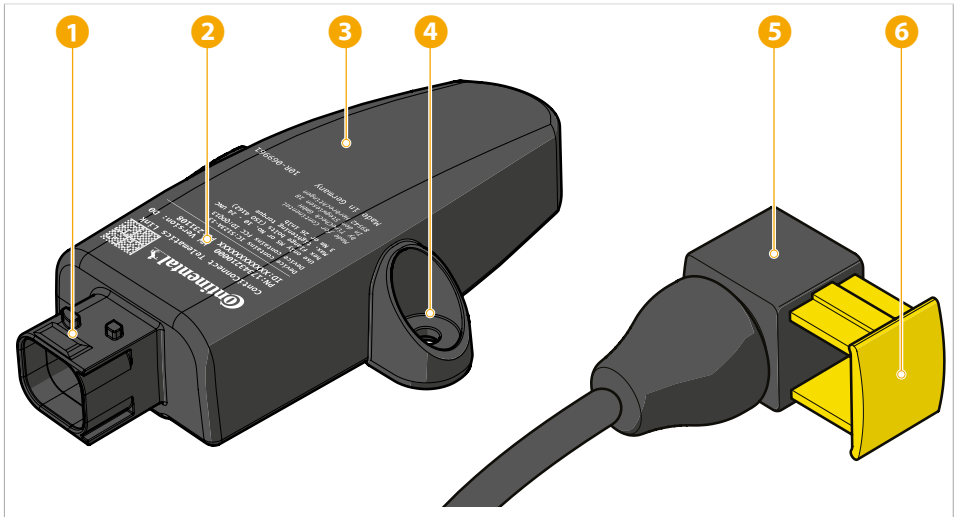
info@conticonnect.com

2. About the Telematics Link

2.1. Design and function

ContiConnect solution offers sensors that transmit the TPMS information via Radio Frequency. The Telematics Link is designed to build the bridge between ContiConnect and telematic providers. The ContiConnect Telematics Link converts radio frequency signals into Bluetooth signals and serves as a building block for an integrated fleet solution.

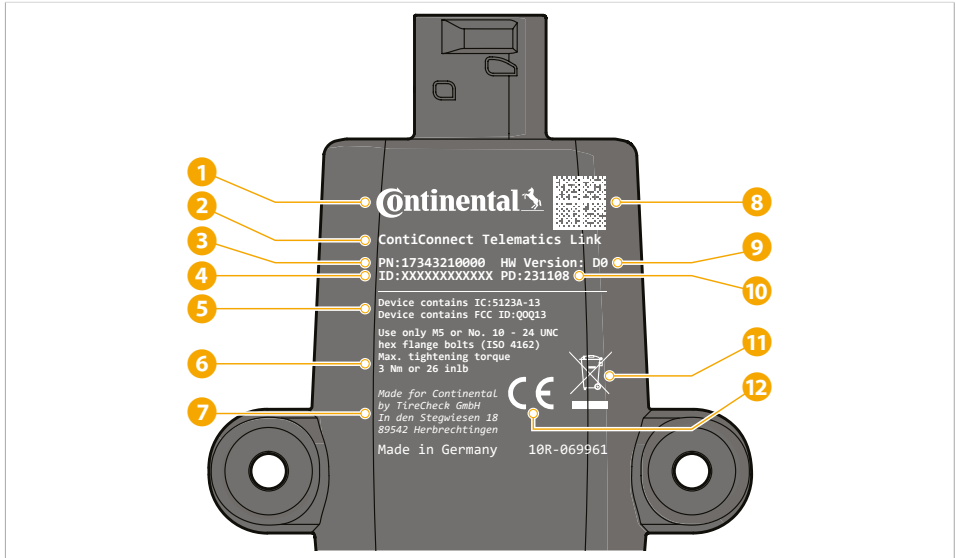
2.2. Main parts



- 1 Power connector
- 2 Type plate
- 3 Telematics Link body
- 4 Mounting hole
- 5 Power cable
- 6 Power cable lock

2.3. Type plate

The following information can be found on the type plate of the sensor:



- 1 Logo
- 2 Product name
- 3 Part number
- 4 Unique product ID
- 5 IC and FCC identification
- 6 Mounting recommendations
- 7 Manufacturer details
- 8 Data matrix code that contains information about the device
- 9 Hardware version
- 10 Date of production
- 11 WEEE label
- 12 CE marking

3. Safety

This chapter contains important information and instructions about the safe installation, operation, and maintenance of the product.

3.1. Intended use

The Telematics Link is only intended for converting radio frequency signals received from ContiConnect Tire Sensors to Bluetooth®. Ensure the ContiConnect Telematics Link is compatible with your 3rd party telematics system.

3.2. Reasonably foreseeable misuse

The following is considered foreseeable misuse:

- Use of the product that deviates from the intended use as described in the previous section.
- Use in conditions that deviate from the operating conditions stated in this manual.
- Failure to comply with the instructions in this manual.
- Failure to eliminate faults, malfunctions, or defects of the product that impose safety risks.
- Failure to carry out the inspections and maintenance operations as described in this manual.
- Unauthorized removal or modification of parts or safety components of the product.

3.3. Qualification of personnel

Only authorized personnel are allowed to perform the installation, operation, and maintenance of the product. They must possess the following qualifications:

- Are legal of age;
- Have received adequate training to install and commission the product;
- Are familiar and abide by the safety instructions and sections of this manual;
- Are familiar and abide by the applicable local, national, and international laws and regulations;
- Have obtained authorization to install the product.

3.4. Personal protective equipment (PPE)

Wear protective glasses or goggles, gloves and protective shoes when installing the product.

3.5. Safety instructions

WARNING

Driving hazard:

- The product only supports monitoring of the tire pressures. The responsibility for maintaining the correct tire pressure lies with the driver.

CAUTION

Risk of short-circuiting:

- Never open or disassemble the product.
- Disconnect the negative terminal of the vehicle battery before installation.
- Use insulated tools to prevent short circuits.
- Follow all vehicle manufacturer guidelines for electronic device installation.

NOTICE

Risk of improper functioning of the product:

- Never install a damaged product. Please contact your supplier in case of a damaged product.

Risk of damaging the product:

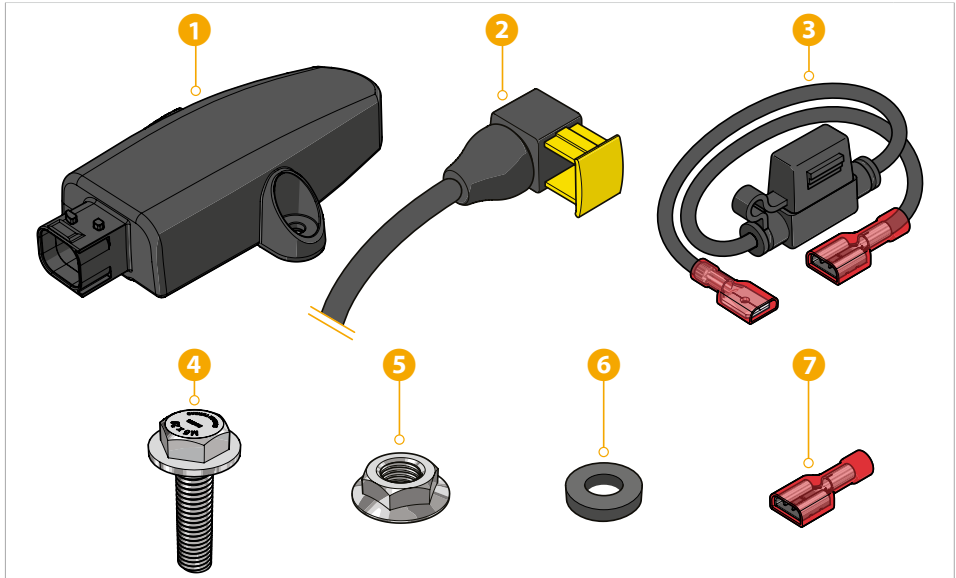
- Always use appropriate tools and follow the installation instructions carefully.
- Never clean the sensor with a direct water jet.
- Always package the sensor in protective packaging material when transporting or storing the sensor.
- Avoid using harsh chemicals or abrasive cleaners when cleaning the sensor.

Ensure the Telematics Link does not interfere with other vehicle electronic systems.

4. Installation

4.1. Delivery scope

1. Remove the packaging and all packaging material.
2. Check the package contents:



1	ContiConnect Telematic Link	1×
2	Power supply cable (6 / 12 m) with cable lock	1×
3	1A Fuse in water tight fuse holder	2×
4	M5 flange bolt	2×
5	M5 nut	2×
6	Rubber buffer	1×
7	Insulated wire terminal	2×

3. Check all parts for visual damage.

NOTICE

Risk of improper functioning of the product. Never install a damaged product. Please contact your supplier in case of a damaged product.

4.2. Installation sequence overview

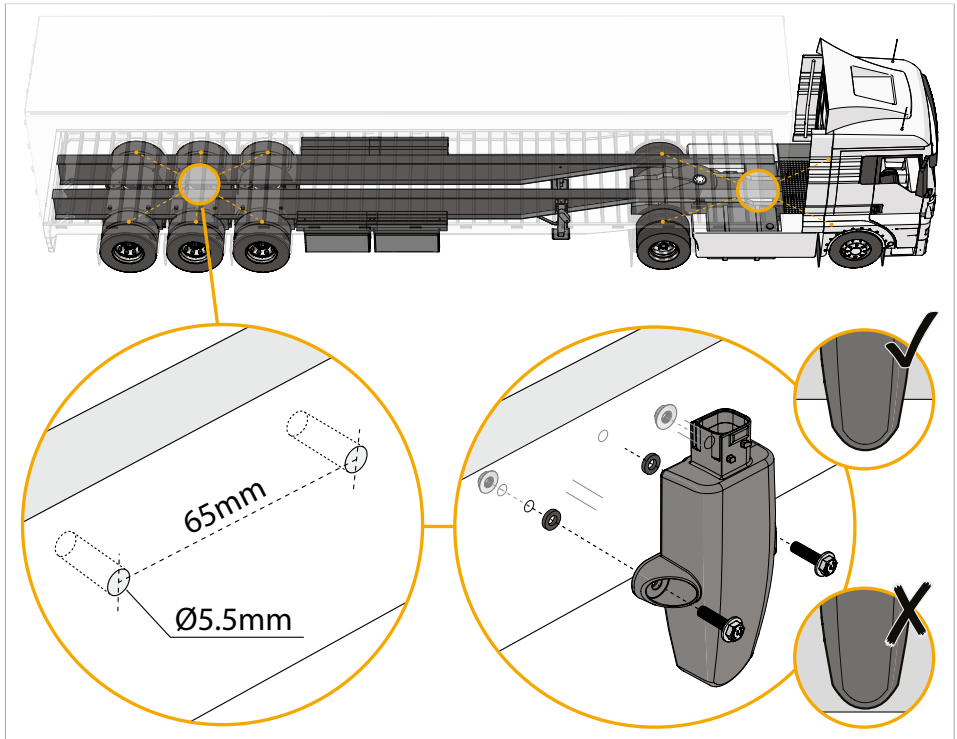
1. Install the tire sensors.
2. Temporarily Install Telematics Link on the vehicle.
3. Create the vehicle in the ContiConnect app.
4. Verify data reception in the ContiConnect app and complete installation verification.
5. Continue to the next chapters to permanently install the Telematics Link.

4.3. Determine permanent installation location

For proper functioning of the Telematics Link, consider the following when determining the position.

- In between the tires on the vehicle where all sensors can be monitored.
- Install with the power connector aimed upwards, toward the sky. If this is not possible, aim the power connector towards the front of the vehicle.
- Not behind or near (<5 cm) metal objects that can interfere with the signal reception.
- Protected from heat sources, such as the exhaust system.
- Ensure the power cable can be routed to the vehicle power supply.
- Easily accessible for installation, checks and maintenance.

4.4. Mount the Telematics Link

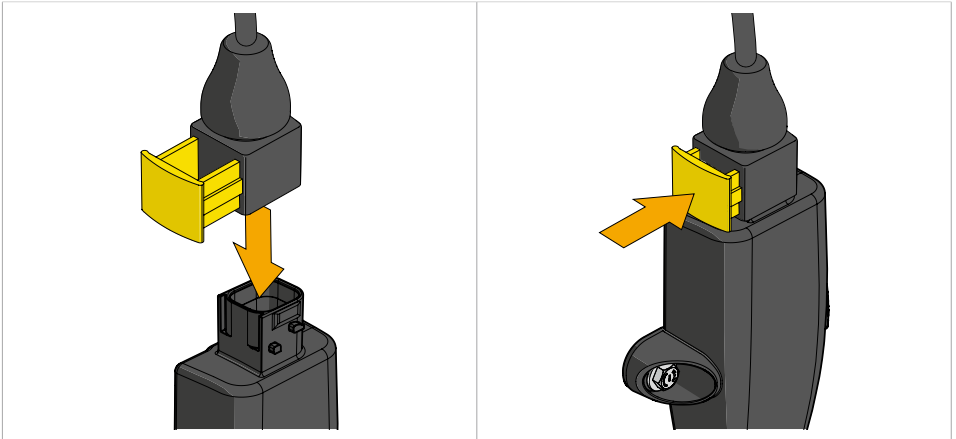


i Install the Telematics Link with the connector facing upwards.

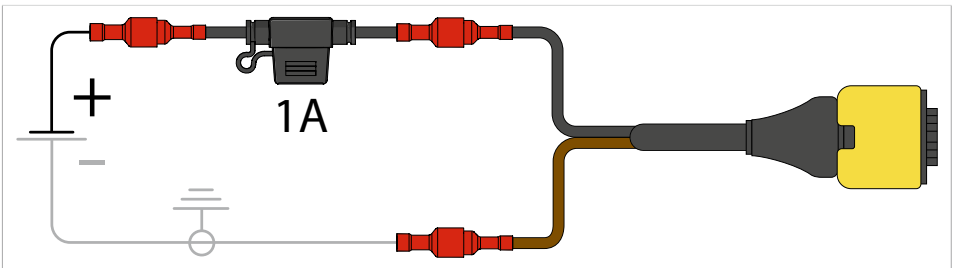
1. Create two $\text{\O}5.5\text{mm}$ holes in a flat surface, e.g. the chassis of the lorry or trailer.
2. Fix the Telematics Link to the holes with the included nuts and bolts with 3Nm (26.5 inlb) of torque.

i Place the rubber buffers between the Telematics link mounting holes and the chassis.

4.5. Connect to vehicle power supply



1. Pull out the cable lock on the power cable connector.
2. Connect the power cable to the Telematics Link.
3. Push in the cable lock to secure the power cable.



4. Connect the open wires of the power cable to the 12/24V vehicle power supply.
 - i** Wire the Telematics Link so it is only powered on during ignition to avoid draining the battery.
5. Install the fuse holder (including 1A fuse) between the positive (+, black) cable and the vehicle power supply using the cable shoes in the fuse kit.
 - i** In case the power cable is connected to the vehicle inside a fuse box, remove the 1A fuse from the fuse holder and insert it directly in the fuse box.

The product is now installed and ready to be configured in the ContiConnect portal.

4.6. Configure the Telematics link in the app

- Download and install the free ContiConnect app on your smart device, available in the App Store (iOS) or Google Play (Android).

 <p>https://play.google.com/store/apps/details?id=com.continental.conticonnect. onsite</p>	 <p>https://apps.apple.com/de/app/conticonnect/id1592126741</p>
ContiConnect for Android	ContiConnect for iOS

- Configure the vehicle in the ContiConnect portal or app.
- Install the tire sensors (not included).
- Configure the sensors in the ContiConnect portal or app.
- Install and commission the 3rd party telematics device or other Bluetooth receiving device.

5. Verification

- Switch on the vehicle engine to power up the Telematics Link.
- Log in to the ContiConnect app on your mobile device using your existing ContiConnect credentials.
- Follow the in-app instructions to commission the Telematics Link. Please configure your vehicle with the ID provided by your telematics provider.
- Test the vehicle installation with the built-in feature on the vehicle page in the ContiConnect app.

6. Troubleshooting

Problem	Possible cause	Possible solution
No signals from the sensor(s).	Defect or loose sensor(s) or sensor battery empty.	Check the sensor(s) with the HHT.
No Bluetooth data received from the Telematics Link.	No power on the Telematics Link.	<ol style="list-style-type: none"> 1. Check the installation with the ContiConnect App (Start installation verification). 2. Check the power supply at the power cable connector: <ul style="list-style-type: none"> • PIN 1: Power/Plus(Black). • PIN 4: Ground/Minus (Brown).

In case of technical questions on the system, please contact your ContiConnect or Telematics supplier or the authorized workshop that installed the system.

7. Maintenance

Regular maintenance helps to extend the service life of the Telematics Link. Use the maintenance schedule and the maintenance instructions in the rest of this chapter to maintain the Telematics Link properly.

Frequency	Procedures	Instructions
Monthly	Inspect the product for: <ul style="list-style-type: none"> • any signs of damage; • wear. 	Please contact your supplier in case of a damaged product.
	Inspect if the power cable is still secured.	Make sure the cable lock is still in place and fully inserted.

NOTICE

Risk of damaging the Telematics Link.

- Avoid using harsh chemicals or abrasive cleaners when cleaning the product.

8. Transport and storage

This chapter contains important information and instructions about the transport and storage of the product.

NOTICE

Risk of damaging the product. Always package the product in protective packaging material when transporting or storing the product.

Store the product in a location that meets the following requirements:

- Indoors.
- Protected from dust and debris.
- With a temperature between -40°C and 120°C.
- With a humidity between 10% and 90%.

9. Disposal



The product should not be discarded as unsorted waste but must be sent to separate collection facilities for recovery and recycling. Dispose waste material according to local regulations.

10. Specifications

Specification	Value
Measurements (l × w × h)	5.7 × 3.2 × 1.1 inch / 145 × 82 × 28 mm
Weight	0.42 lbs / 190 gr
IP Class	IP69K
Receiving RF frequency	433.92 MHz
Transmitting frequency	2.4 GHz
Maximum transmitter power	<10 dBm
Mounting	On the chassis close to the tires
Bluetooth® version	Bluetooth® Low Energy 4.2
Power supply	8-32 V DC ignition
Power cable length	12 m
Operating temperature	-40°F to 185°F / -40°C to +85°C
Country of origin	Germany

11. Conformity

The Telematics Link features a CE marking to demonstrate conformity to all relevant European standards and directives, as well as FCC (USA) and IC (Canada) certifications.



The full declaration of conformity can be consulted via www.continental-tires.com/products/b2b/services-and-solutions/conticonnect/downloads/

Continental Reifen Deutschland GmbH

Continental-Plaza 1
30175 Hannover
Germany

www.conticonnect.com

www.continental-digital-solutions.com

www.continental-corporation.com