



Winter duties

ENHANCED BY GERMAN TECHNOLOGY



The new VanContact™ Viking

- › Superb mileage performance on wintry and wet surfaces due to an optimised Nordic Matrix Compound
- › Very good aquaplaning behaviour through the intelligent pattern design
- › Perfect handling on snow and ice thanks to snow catchers and an innovative sipe design

**GERMAN
TECHNOLOGY** 

www.continental-tyres.com



Improving driving safety in all winter conditions.

For all kinds of vans in wintertime.

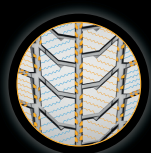
Technical highlights:



Superb mileage performance on wintry and wet surfaces due to an optimised Nordic Matrix Compound.
The optimised Nordic Matrix Compound consists of silica, rapeseed oil and carbon black to provide a higher overall performance level. The silica improves performance on wet surfaces, the added rapeseed oil ensures a better handling in winter conditions, while the carbon black facilitates a superb mileage. All in all, the tyre's new matrix is especially well optimised for Nordic roads.



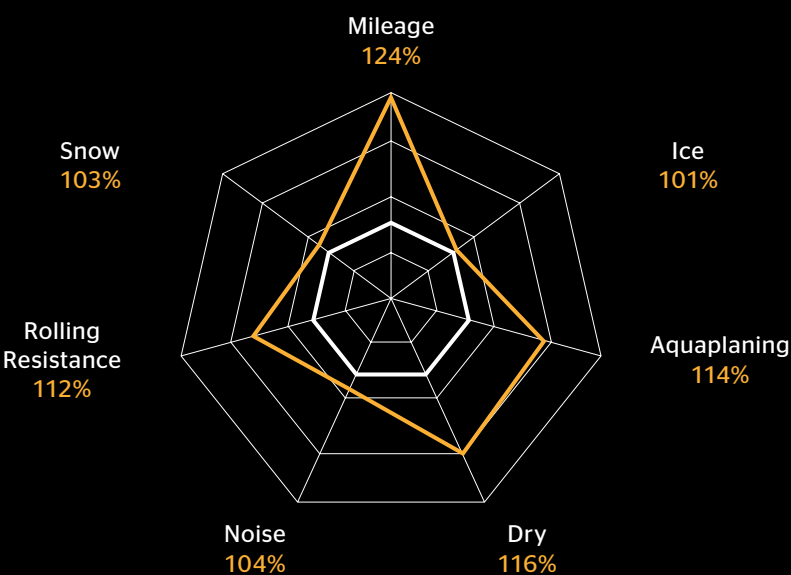
Very good aquaplaning behaviour through the intelligent pattern design.
The tyre's optimised directional pattern improves handling during slushplaning and aquaplaning, since the pattern facilitates a more effective expulsion of the water and slush. Its symmetric main grooves discharge water and slush directly from the pattern's centre straight to the outside.



Perfect handling on snow and ice thanks to snow catchers and an innovative sipe design.
The sipes around the pattern interlock in the left and right driving directions. This improves handling and braking performance in all driving situations on snow and ice. To further ensure optimum traction and safety in winter conditions, the VanContact™ Viking is also equipped with snow catchers within its grooves: loose snow from the road's surface gets collected inside these grooves. This improves the snow-snow traction, which leads to enhanced handling and a better braking performance in all driving situations on snow and ice.

Tyre performance:

— VanContact™ Viking
— Vanco™ VikingContact 2 = 100%



Tyre dimensions:

Tyre width in mm	Tyre cross section	Rim size in inches	Speed symbol	Load index
195-235	Series 60-75	15-17	N/R	102-121

Last updated: 12/2018