

CrossContact A/T²

RESPECT THE WILD



TRAX PLUS

Aggressive **TRACTION** that takes on tough terrain



TUFF PLUS

Engineered to endure, **DURABILITY** that won't back down



BLACKPAW COMPOUND

Built to **GRIP** where others slip



Built for the bold and the untamed.
An all-terrain tyre that leaves nothing behind - **BUT TRACKS.**



“When the wild calls,
answer with confidence.”

CrossContact A/T²

BENEFITS



FEATURES

TRACTION

That takes on tough terrain

TRAX PLUS



- › Increased **tread depth** for superior handling precision and vehicle stability.
- › High **void volume** enhances conformity to uneven surface to interlock more effectively with off-road terrain.
- › Self-cleaning **open shoulder** expels mud, water, and debris for better gripping claw action on loose, uneven, or slippery terrain.

DURABILITY

That won't back down

TUFF PLUS



- › Reinforced **off-shoulder thickness** and **robust sidewall protectors** are designed to absorb and deflect impact forces from rocks, roots, and uneven surfaces.
- › Rigid **tread block pattern** designed with carefully engineered groove angles and ejector features to actively dislodge small stones and debris before they can embed into the tread, protecting the tyre from cut-and-chip damage.

GRIP

Where others slip

BLACKPAW COMPOUND



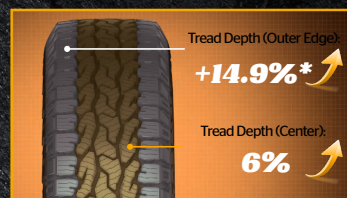
- › **BlackPaw Compound** provides surface adaptability for continuous grip. Its-season formulation preserves elasticity in low temperatures, enhancing performance in cold, wet, or dry environments.

Feature Highlights



Aggressive Traction Increased tread depth

- › CrossContact A/T²'s increased tread depth allows the tyre to penetrate deeper into loose surfaces like **mud, sand, and gravel**.
- › Deeper biting edges **improve traction** by creating additional contact points that 'grab' and dig into the terrain's surface.
- › Enhanced tread block rigidity reduces flex during cornering and high-stress maneuvers, contributing to **superior handling precision and vehicle stability**.



vs. Continental mild AT tyres
*Based on internal lab data



Durability Sidewall protectors

- › The reinforced off-shoulder thickness and robust sidewall protectors are designed to **absorb and deflect impact forces from rocks, roots, and uneven surfaces**.
- › This added layer of protection reduces the risk of punctures, abrasions, and sidewall damage, **significantly increasing the tyre's durability and lifespan in demanding off-road environments**.

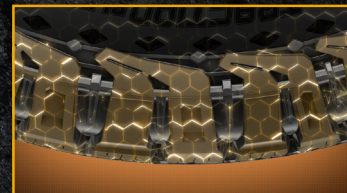


vs. Continental mild AT tyres
*Based on internal lab data



Grip BlackPaw Compound

- › The advanced polymer system of the BlackPaw Compound provides **surface adaptability for continuous grip**.
- › At the same time, its **all-season formulation** preserves elasticity in low temperatures, **enhancing performance in cold, wet, or dry environments**.



Performance Comparison

- CrossContact AX6
- CrossContact A/T²

Tyre size: 265/65 R17

*Based on internal tests.

Actual performance may vary according to tyre size.

