

Conti HAU 3 WT

Waste Transport All-Position

Four rib tread pattern

with zigzag groove geometry for resistance to high scrub applications.



Extra sidewall protection

for better resistance to curbs, cuts and other sidewall abrasions.

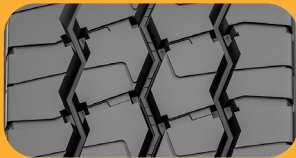
Conti HAU 3 WT

Waste Transport All-Position

- Four rib tread pattern** with zigzag groove geometry for resistance to high scrub applications.
- Innovative tread compound** for outstanding mileage and heat reduction.
- Improved bead design** for increased durability and resistance to brake heat.
- Extra sidewall protection** for better resistance to curbs, cuts and other sidewall abrasions.

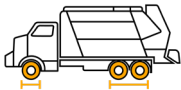


Key Features



Recommended Application

Urban Waste



Compares to

Michelin: XZUS2 | Bridgestone: M870 | Goodyear: Endurance WHA

Product Data - Conti HAU 3 WT

| Tire Size | Load Range | Article Number | Tread Depth (32nds) | Max Speed (MPH) | Static Loaded Radius | | Overall Inflated Diameter | | Overall Inflated Width | | Loaded Section Width | | Approved Rim(s) | Minimum Dual Spacing | | Revs Per Unit | | Tire Weight | | Max. Load @ Inflation | |
|-------------|------------|----------------------------|---------------------|-----------------|----------------------|-----|---------------------------|------|------------------------|-----|----------------------|-----|-----------------|----------------------|-----|---------------|-----|-------------|----|------------------------|-----------------------|
| | | | | | | | | | | | | | | | | | | | | Single | Dual |
| | | | | | IN | MM | IN | MM | IN | MM | IN | MM | | IN | MM | MI | KM | LB | KG | LBS, PSI (KG, KPa) | LBS, PSI (KG, KPa) |
| 315/80R22.5 | L | 05141090000 05652550000 | 26 | 68 | 20.0 | 507 | 43.1 | 1095 | 12.4 | 314 | 13.8 | 349 | 9.00, 8.25* | 13.8 | 351 | 480 | 298 | 167 | 76 | 10200, 130 (4540, 900) | 9090, 130 (4125, 900) |

TUBELESS TIRES ON 15 DEGREE DROP CENTER RIMS

*315/80R22.5 tires used on 8.25" rims are restricted to a maximum of 7610 lbs at 120 psi in dual usage, and 8000 lbs at 120 psi in single usage.

■ STANDARD ARTICLE ■ INTELLIGENT ARTICLE

Note: Rim listed first is the measuring rim. Minimum Dual Spacing calculated without chains. These specifications subject to change without notice. # - Exceeding the lawful speed limit is neither recommended nor endorsed. Overall widths will change 0.1 inch (2.5 mm) for each 1/4 inch change in rim width. Minimum dual spacing should be adjusted accordingly. Continental Tire the Americas, LLC reserves the right to change product specifications at any time without notice or obligations. Please consult rim manufacturers load and inflation limits. Never exceed rim manufacturers limits without permission of component manufacturer.