

Conti HAU 5

Metro Service All-Position

Comfortable ride

for drivers and passengers through extremely quiet running tread.

Sidewall wear indicators

provide clear warning when tires need to be removed from service for safety.



EV Compatible

This product meets the diverse requirements of combustion engine, hybrid and electric vehicles.



3PMSF
Designation



Mud + Snow
Designation

Conti HAU 5

Metro Service All-Position

EV Compatible. This product meets the diverse requirements of combustion engine, hybrid and electric vehicles.

Sidewall wear indicators provide clear warning when tires need to be removed from service for **safety**.

Additional sidewall protection for resistance against curbing, abrasions and cuts.

Tread compounding delivers **excellent mileage** in high scrub, urban metro conditions.

Low noise provides a quieter, **comfortable ride** for drivers and passengers.

3 Peak Mountain Snowflake (3PMSF) and **Mud & Snow (M+S)** designation for superior performance in **all weather conditions**.

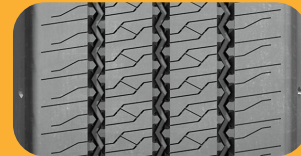
Durable casing for premium retreadability.



Key Features

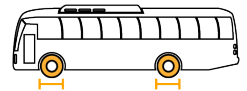


EV Compatible 3PMSF Designation Mud + Snow Designation



Recommended Application

Urban Bus



Compares to

Michelin: X[®] INCITY Z SL

Product Data - Conti HAU 5

Tire Size	Load Range	Article Number	Tread Depth (32nds)	Max Speed (MPH)	Static Loaded Radius		Overall Inflated Diameter		Overall Inflated Width		Loaded Section Width		Approved Rim(s)	Minimum Dual Spacing		Revs Per Unit		Tire Weight		Max. Load @ Inflation	
					IN	MM	IN	MM	IN	MM	IN	MM		IN	MM	MI	KM	LB	KG	Single	Dual
305/85R22.5	J	05140840000 05655410000	24	68	20.1	510	42.8	1088	12.0	304	13.1	333	9.00, 8.25	13.5	343	483	300	143	65.1	7830, 120 (3550, 825)	7160, 120 (3250, 825)

TUBELESS TIRES ON 15 DEGREE DROP CENTER RIMS

■ STANDARD ARTICLE

■ INTELLIGENT ARTICLE

Note: Rim listed first is the measuring rim. Minimum Dual Spacing calculated without chains. These specifications subject to change without notice. # - Exceeding the lawful speed limit is neither recommended nor endorsed. Overall widths will change 0.1 inch (2.5 mm) for each 1/4 inch change in rim width. Minimum dual spacing should be adjusted accordingly. Continental Tire the Americas, LLC reserves the right to change product specifications at any time without notice or obligations. Please consult rim manufacturers load and inflation limits. Never exceed rim manufacturers limits without permission of component manufacturer.