

# Conti HDR 5

## 19.5" Drive

**New open-shoulder**  
tread design.

**3D matrix siping**  
for improved traction and  
wear over life of tire.



**New tread compound**  
delivers improved rolling  
resistance and durability.



3PMSF  
Designation



Mud + Snow  
Designation

Conti HDR 5  
19.5" Drive

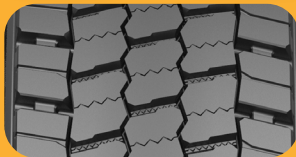
New tread compound for improved **rolling resistance and tread durability.**

New **open-shoulder** tread design.

3D matrix siping for **improved traction and wear** over life of tire.

Tread pattern designed to deliver **M+S** (Mud and Snow) and **3PMSF** (Three Peak Mountain Snowflake) for demanding conditions.

16/32" tread pattern designed to deliver **improved mileage and handling** performance.



Key Features



3PMSF Designation

M+S

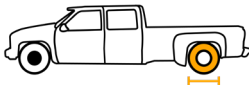
Mud + Snow Designation



Retread Available

Recommended Application

Regional / Over-the-Highway



Compares to

Michelin: XDS 2 | Bridgestone: M729F | Goodyear: Fuel Max RTD ULT, Range Max RTD UTL

Product Data - Conti HDR 5 (19.5")

Tire Size	Load Range	Article Number	Tread Depth (32nds)	Max Speed (MPH)	Static Loaded Radius		Overall Inflated Diameter		Overall Inflated Width		Loaded Section Width		Approved Rim(s)	Minimum Dual Spacing		Revs Per Unit		Tire Weight		Max. Load @ Inflation	
					IN	MM	IN	MM	IN	MM	IN	MM		Single		Dual					
														LBS, PSI (KG, KPa)	LBS, PSI (KG, KPa)	LBS, PSI (KG, KPa)	LBS, PSI (KG, KPa)				
225/70R19.5	G	05223820000 05655050000	16	87	15.1	383	32.0	813	8.6	218	9.3	236	6.00, 6.75	10.0	254	646	401	61	28	3970, 110 (1800, 760)	3750, 110 (1700, 760)
225/70R19.5	H	05225820000 05655080000	16	87	15.1	383	32.0	813	8.6	218	9.3	236	6.75*	10.0	254	647	402	62.5	29	4190, 120 (1900, 830)	3970, 120 (1800, 830)
TUBELESS TIRES ON 15 DEGREE DROP CENTER RIMS																					

TUBELESS TIRES ON 15 DEGREE DROP CENTER RIMS

\*ONLY APPROVED RIM SIZE

■ STANDARD ARTICLE

■ INTELLIGENT ARTICLE

Note: Rim listed first is the measuring rim. Minimum Dual Spacing calculated without chains. These specifications subject to change without notice. # - Exceeding the lawful speed limit is neither recommended nor endorsed. Overall widths will change 0.1 inch (2.5 mm) for each 1/4 inch change in rim width. Minimum dual spacing should be adjusted accordingly. Continental Tire the Americas, LLC reserves the right to change product specifications at any time without notice or obligations. Please consult rim manufacturers load and inflation limits. Never exceed rim manufacturers limits without permission of component manufacturer.