

Conti Hybrid HD3

19.5" Drive



Narrowed groove widths

result in increased pattern volume which improves wear resistance to guarantee high mileage performance.

Chambered edge

reduces deformation amplitude in sidewall and bead area which results in improved rolling resistance and helps lower fuel consumption.

M+S

Mud + Snow Designation

Conti Hybrid HD3

19.5" Drive

Advanced application-optimized **hybrid tread compound** adds up to significant improvements in rolling resistance and mileage.

Chambered edge reduces deformation amplitude in sidewall and bead area which results in improved rolling resistance and helps lower fuel consumption.

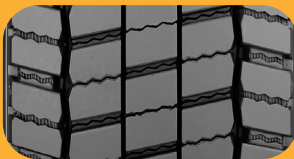
Narrowed groove widths result in increased pattern volume which improves wear resistance to guarantee high mileage performance.



Key Features

M+S

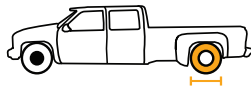
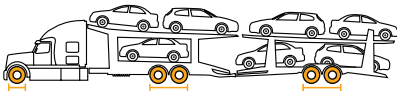
Mud + Snow Designation



*TREAD B

Recommended Application

Regional and Long Haul



Compares to

Michelin: XDS 2 | Bridgestone: M729F | Goodyear: Fuel Max RTD ULT

Product Data - Conti Hybrid HD3 (19.5")

Tire Size	Load Range	Article Number	Tread Depth (32nds)	Max Speed (MPH)	Static Loaded Radius		Overall Inflated Diameter		Overall Inflated Width		Loaded Section Width		Approved Rim(s)	Minimum Dual Spacing		Revs Per Unit		Tire Weight		Max. Load @ Inflation	
					IN	MM	IN	MM	IN	MM	IN	MM		IN	MM	MI	KM	LB	KG	Single	Dual
245/70R19.5	G	05222240000	19	81	15.5	393	33.2	843	9.7	246	10.3	263	7.50, 6.75	11.0	279	623	387	82	37	4540, 110 (2060, 760)	4300, 110 (1950, 760)
245/70R19.5	H	05210830000	19	81	15.5	393	33.2	843	9.7	246	10.3	263	7.50, 6.75	11.0	279	623	387	82	37	4940, 120 (2240, 830)	4675, 120 (2120, 830)
265/70R19.5 Tread B	G	05225540000	20	81	15.8	401	34.7	881	10.3	262	10.7	272	7.50, 6.75, 8.25	11.2	286	613	381	86	39	5510, 115 (2500, 790)	4205, 115 (2360, 790)
285/70R19.5 Tread B	H	05220880000	20	81	16.2	412	35.9	911	11.1	283	11.6	294	8.25, 7.50, 9.00	12.5	318	590	366	97	44	6610, 125 (3000, 860)	6175, 125 (2800, 860)

TUBELESS TIRES ON 15 DEGREE DROP CENTER RIMS

■ STANDARD ARTICLE

■ INTELLIGENT ARTICLE

Note: Rim listed first is the measuring rim. Minimum Dual Spacing calculated without chains. These specifications subject to change without notice. # - Exceeding the lawful speed limit is neither recommended nor endorsed. Overall widths will change 0.1 inch (2.5 mm) for each 1/4 inch change in rim width. Minimum dual spacing should be adjusted accordingly. Continental Tire the Americas, LLC reserves the right to change product specifications at any time without notice or obligations. Please consult rim manufacturers load and inflation limits. Never exceed rim manufacturers limits without permission of component manufacturer.