

Gen·era·(tion) 5

New era of confidence



Conti HSR 5
ContiTread HSR 5
19.5" Regional steer

Applications: Long haul/regional over the highway all-position use

Legend:

3G Casing	SmartWay Verified	Intelligent Tire	Retread Available

PRODUCT FEATURES ABOVE ONLY APPLY TO PRODUCTS IF THE MATCHING ICON IS DARKENED.

Conti HSR 5

19.5" Regional All-Position

GOODS PEOPLE CONSTRUCTION



PRODUCT DATA

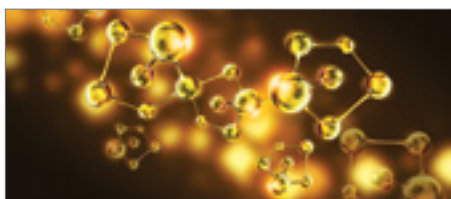


TIRE SIZE	LOAD RANGE	ARTICLE NUMBER	TREAD DEPTH (32nds)	MAX SPEED (MPH)	STATIC LOADED RADIUS		OVERALL INFLATED DIAMETER		OVERALL INFLATED WIDTH		LOADED SECTION WIDTH		APPROVED RIM(S)	MINIMUM DUAL SPACING		REVS PER UNIT		TIRE WEIGHT		MAX. LOAD @ INFLATION			
					IN	MM	IN	MM	IN	MM	IN	MM		IN	MM	IN	MM	MI	KM	LB	KG	LBS, PSI (KG, KPa)	LBS, PSI (KG, KPa)
225/70R19.5	G	05124460000 #05655090000#	16	87	15.1	383	32.0	813	8.6	218	9.3	236	6.00, 6.75	10.0	254	647	402	60	28	3970, 110 (1800, 760)	3750, 110 (1700, 760)		

TUBELESS TIRES ON 15 DEGREE DROP CENTER RIMS

Note - Rim listed first is the measuring rim. Minimum Dual Spacing calculated without chains. # - Exceeding the lawful speed limit is neither recommended nor endorsed. Overall widths will change 0.1 inch (2.5 mm) for each 1/4 inch change in rim width. Minimum dual spacing should be adjusted accordingly. Continental Tire the Americas, LLC reserves the right to change product specifications at any time without notice or obligations. Please consult rim manufacturers load and inflation limits. Never exceed rim manufacturers limits without permission of component manufacturer.

Features & Benefits



New tread compound delivers **improved rolling resistance and durability.**



Developed to provide **excellent lateral stability** to minimize squirm and improve handling.



Designed with full width siping for **improved traction and handling** during life of the tire.

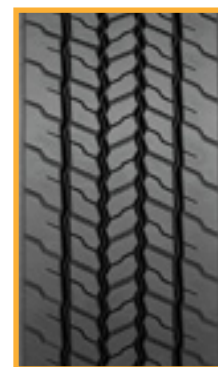


This product is 3PMSF Certified.



This product is Mud + Snow Certified.

ContiTread™



WIDTH (MM)	DEPTH (32nds)
HSR 5 - 19.5"	
200	16/32
210	16/32

Applications: Long haul/regional over the highway all-position use.