

# Conti Urban HA3

## All-Position

**Sidewall wear indicator**  
for visual cue to trigger rotation.



**New urban tread compound**  
for prolonged mileage performance with excellent driving characteristics.

**Increased sidewall gauge**  
for improved resistance against curbing, cuts and abrasions.



3PMSF  
Designation



Mud + Snow  
Designation

# Conti Urban HA3

## All-Position

**Increased sidewall gauge** for improved resistance against curbing, cuts and abrasions.

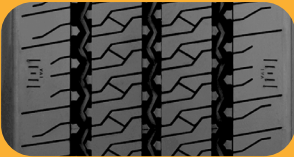
**Sidewall wear indicator** for visual cue to trigger rotation.

**All-season compounding** to deliver performance during any season.

**New urban tread compound** for prolonged mileage performance with excellent driving characteristics.

**Comfortable ride** for driver and passengers through extremely quiet running tread.

**Durable casing** for premium retreadability and enhanced mileage.



### Key Features



3PMSF Designation    Mud + Snow Designation

M+S

### Recommended Application

Urban Metro



### Compares to

Michelin: X InCity Z

### Product Data - Conti Urban HA3

Tire Size	Load Range	Article Number	Tread Depth (32nds)	Max Speed (MPH)	Static Loaded Radius		Overall Inflated Diameter		Overall Inflated Width		Loaded Section Width		Approved Rim(s)	Minimum Dual Spacing		Revs Per Unit		Tire Weight		Max. Load @ Inflation	
					IN	MM	IN	MM	IN	MM	IN	MM		IN	MM	MI	KM	LB	KG	Single LBS, PSI (KG, kPa)	Dual LBS, PSI (KG, kPa)
305/70R22.5	L	05141330000 05656070000	23	68	18.6	473	39.9	1014	11.6	294	12.6	320	9.00, 8.25	13.5	343	519	322	130	59	8820, 123 (4000, 850)	8270, 123 (3750, 850)

TUBELESS TIRES ON 15 DEGREE DROP CENTER RIMS

■ STANDARD ARTICLE    ■ INTELLIGENT ARTICLE

Note: Rim listed first is the measuring rim. Minimum Dual Spacing calculated without chains. These specifications subject to change without notice. # - Exceeding the lawful speed limit is neither recommended nor endorsed. Overall widths will change 0.1 inch (2.5 mm) for each 1/4 inch change in rim width. Minimum dual spacing should be adjusted accordingly. Continental Tire the Americas, LLC reserves the right to change product specifications at any time without notice or obligations. Please consult rim manufacturers load and inflation limits. Never exceed rim manufacturers limits without permission of component manufacturer.