

HDL2 Eco Plus

Fuel-Efficient, Super Single Drive

Groove geometry

designed with stress reduction elements to separate forces and reduce premature wear.



3D center sipes

increase groove strength for longevity, while allowing more tread block flexibility.

HDL2 Eco Plus

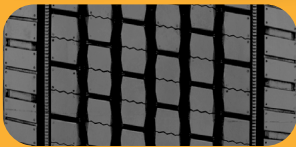
Fuel-Efficient, Super Single Drive

Advanced tread compounding with super single weight reduction provides lower rolling resistance.

Features 27/32" tread depth, an **evolving sipe tread design** and closed shoulder.

Groove geometry designed with stress reduction elements to separate forces and reduce premature wear.

3D center sipes increase groove strength for longevity, while allowing more tread block flexibility.

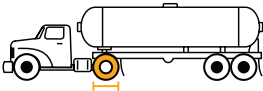


Key Features

 SmartWay® Verified  Retread Available

Recommended Application

Long Haul



Compares to

Michelin: X-One Line Energy D | Bridgestone: Greatec M835A Ecopia | Goodyear: Fuel Max SSD

Product Data - HDL2 Eco Plus

Tire Size	Load Range	Article Number	Tread Depth (32nds)	Max Speed (MPH)	Static Loaded Radius		Overall Inflated Diameter		Overall Inflated Width		Loaded Section Width		Approved Rim(s)	Minimum Dual Spacing		Revs Per Unit		Tire Weight		Max. Load @ Inflation			
					IN	MM	IN	MM	IN	MM	IN	MM		IN	MM	IN	MM	MI	KM	LB	KG	Single	Dual
																						LBS, PSI (KG, KPa)	LBS, PSI (KG, KPa)
445/50R22.5	L	05210130000 05652840000	27	75	18.8	478	40.4	1027	17.5	445	19.2	488	14.00	N/A	N/A	512	318	200	91	10200, 120 (4625, 830)	N/A		

TUBELESS TIRES ON 15 DEGREE DROP CENTER RIMS

■ STANDARD ARTICLE ■ INTELLIGENT ARTICLE

Note: Rim listed first is the measuring rim. Minimum Dual Spacing calculated without chains. These specifications subject to change without notice. # - Exceeding the lawful speed limit is neither recommended nor endorsed. Overall widths will change 0.1 inch (2.5 mm) for each 1/4 inch change in rim width. Minimum dual spacing should be adjusted accordingly. Continental Tire the Americas, LLC reserves the right to change product specifications at any time without notice or obligations. Please consult rim manufacturers load and inflation limits. Never exceed rim manufacturers limits without permission of component manufacturer.