

HTL1

Fuel-Efficient, Super Single Trailer

13/32" tread depth
minimizes irregular wear.



.....
Shoulder defense groove

provides protection
against rapid shoulder
wear.

HTL1

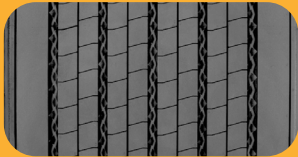
Fuel-Efficient, Super Single Trailer

- 13/32" tread depth** minimizes irregular wear.
- Shoulder defense groove** provides protection against rapid shoulder wear.
- Patented innovative groove technology** leads to minimum stone retention, extending casing life.



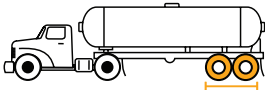
Key Features

- SmartWay® Verified
- Retread Available



Recommended Application

Long Haul



Compares to

Michelin: X One Line Energy T2 | Bridgestone: Greatec R197 Ecopia | Goodyear: Fuel Max SST

Product Data - HTL1

Tire Size	Load Range	Article Number	Tread Depth (32nds)	Max Speed (MPH)	Static Loaded Radius		Overall Inflated Diameter		Overall Inflated Width		Loaded Section Width		Approved Rim(s)	Minimum Dual Spacing		Revs Per Unit		Tire Weight		Max. Load @ Inflation			
					IN	MM	IN	MM	IN	MM	IN	MM		IN	MM	IN	MM	MI	KM	LB	KG	Single	Dual
																						LBS, PSI (KG, KPa)	LBS, PSI (KG, KPa)
445/50R22.5	L	05310000000 05652500000	13	75	18.1	460	39.2	996	17.3	439	19.0	483	14.00	N/A	N/A	528	328	179	81	10200, 120 (4625, 830)	N/A		

TUBELESS TIRES ON 15 DEGREE DROP CENTER RIMS

■ STANDARD ARTICLE ■ INTELLIGENT ARTICLE

Note: Rim listed first is the measuring rim. Minimum Dual Spacing calculated without chains. These specifications subject to change without notice. # - Exceeding the lawful speed limit is neither recommended nor endorsed. Overall widths will change 0.1 inch (2.5 mm) for each 1/4 inch change in rim width. Minimum dual spacing should be adjusted accordingly. Continental Tire the Americas, LLC reserves the right to change product specifications at any time without notice or obligations. Please consult rim manufacturers load and inflation limits. Never exceed rim manufacturers limits without permission of component manufacturer.