

HTL2 Eco Plus

17.5" Heavy Haul Trailer

13/32" tread depth
minimizes irregular wear.

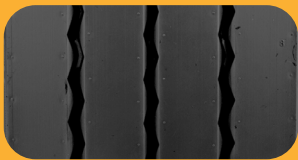


Innovative groove geometry
promotes efficient water evacuation, traction and wet braking capabilities throughout tire life.

HTL2 Eco Plus

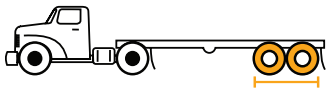
17.5" Heavy Haul Trailer

- Low rolling resistance compound** provides excellent fuel economy and cool operating temperatures.
- Advanced tread design** provides long original mileage and low cost per mile.
- Heavy ply construction** for structural durability in large capacity applications.
- Innovative groove geometry** promotes efficient water evacuation, traction and wet braking capabilities throughout tire life.
- Patented groove technology** leads to minimum stone retention, extending casing life.



Recommended Application

Long Haul



Compares to

Michelin: XTA2 Energy | Bridgestone: R238 | Goodyear: KMax T

Product Data - HTL2 Eco Plus

Tire Size	Load Range	Article Number	Tread Depth (32nds)	Max Speed (MPH)	Static Loaded Radius		Overall Inflated Diameter		Overall Inflated Width		Loaded Section Width		Approved Rim(s)	Minimum Dual Spacing		Revs Per Unit		Tire Weight		Max. Load @ Inflation	
					IN	MM	IN	MM	IN	MM	IN	MM		IN	MM	MI	KM	LB	KG	Single	Dual
																				LBS, PSI (KG, kPa)	LBS, PSI (KG, kPa)
215/75R17.5	J	05311070000 05656150000	15	75	14.1	359	30.4	772	8.5	215	9.1	231	6.00, 6.75	9.5	242	681	423	61	28	4805, 125 (2180, 860)	4540, 125 (2060, 860)
235/75R17.5	J	05310180000 04650170000	13	75	14.5	369	31.6	802	9.2	234	10.0	254	6.75, 7.50	10.6	269	656	407	65	29	6005, 125 (2725, 860)	5675, 125 (2575, 860)
245/75R17.5	J	05310190000 04650160000	13	75	14.5	369	31.6	802	9.2	234	10.0	254	6.75, 7.50	10.6	269	656	407	65	29	6005, 125 (2725, 860)	5675, 125 (2575, 860)

TUBELESS TIRES ON 15 DEGREE DROP CENTER RIMS

■ STANDARD ARTICLE ■ INTELLIGENT ARTICLE

Note: Rim listed first is the measuring rim. Minimum Dual Spacing calculated without chains. These specifications subject to change without notice. # - Exceeding the lawful speed limit is neither recommended nor endorsed. Overall widths will change 0.1 inch (2.5 mm) for each 1/4 inch change in rim width. Minimum dual spacing should be adjusted accordingly. Continental Tire the Americas, LLC reserves the right to change product specifications at any time without notice or obligations. Please consult rim manufacturers load and inflation limits. Never exceed rim manufacturers limits without permission of component manufacturer.